



The science behind  
**good taste**



Stainless Steel Cabinet  
Glass Outer Window  
Grab'n Go Handle

## Commercial Microwave Ovens

The Butler MWO-25 commercial microwave oven is a perfect replacement for inappropriate domestic ovens used in food-service applications. It bakes fast and evenly and is suitable for a wide variety ranging from pastries to entries. Its durable construction is perfectly adapted for commercial usage such as food stores, pizza outlets, casual dining restaurants, clubs, deli applications and more.



- Ample 25 litre capacity accommodates a 305 mm (12") platter
- Up to 20 programmable menu options for consistent results
- User friendly touch control pad
- 3 stage cooking and 5 microwave power levels
- See-through door with lighted interior
- Grab'n Go handle
- Stainless steel cabinet and oven cavity
- Removable splatter shield

### Cheeseburger



9 oz. cheeseburger can be reheated within 3 minutes

### Sandwich



8 oz. sandwich can be reheated within 1 minute

### Lasagna



8 oz. lasagna can be cooked within 20 minutes and preheated in 3 minutes

### Nachos



10 oz. nachos can be reheated within 2 minutes

## Induction Hobs & Woks

With Butler induction hobs & woks, you could not only say goodbye to flames, smoke and pollution but also enhance the ambience of your kitchen area. Ideal for show kitchens, demonstration cooking, catering and buffet applications, they come in a choice of 4 models in table top and drop-in variants.

### Key Features

- 5 level power (400W, 1000W, 2000W, 2500W, 3300W)
- The first level power with warmer function
- Dry-burning protection
- Error warning
- IPX3 waterproof
- Stainless steel shell
- Model I SW-350SI



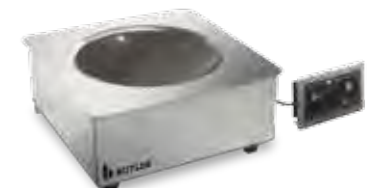
TIH-3.3



TIW-3.3



DIH-3.3



DIW-3.3

	Table Top Induction		Drop In Induction	
	Hob	Wok	Hob	Wok
Model Number	TIH-3.3	TIW-3.3	DIH-3.3	DIW-3.3
Rated Power	3300W	3300W	3300W	3300W
Adjustable Power	400W-3300W	400W-3300W	400W-3300W	400W-3300W
Voltage	220V / 50Hz.	220V / 50Hz.	220V / 50Hz.	220V / 50Hz.
Product Weight				
Dimensions (mm)	350*440*113	380*420*180	340*340*132	380*380*180
Cut Out Size (mm)	-	-	330*330	370*370
Control Box Size (mm)	-	-	128*64	128*64
Control Box Cut Out Size (mm)	-	-	141*70	141*70

In case of Drop-In Induction units, selection of 60-65-70-75-80°C can be made in the warmer function

Voltage: 220-240V/50Hz Specifications are subject to change without prior notice due to continuous product development

## Difference between commercial and household microwave ovens

### Commercial Microwave Ovens

### Conventional Microwave Ovens

<b>Functions</b>	<ul style="list-style-type: none"> <li>Even heat delivery to the food, large capacity, pre-set memory, one button for common menus</li> <li>Three power levels and automatic fault diagnosis</li> </ul>	<ul style="list-style-type: none"> <li>Slow heating, unsuitable for commercial applications, rely on turntable for even heating</li> <li>No automatic fault diagnosis</li> </ul>
<b>Durability</b>	<ul style="list-style-type: none"> <li>Stainless steel cavity</li> <li>Withstands frequent usage (100s of times per day)</li> </ul>	<ul style="list-style-type: none"> <li>Sprayed or painted doors</li> <li>Only for home use (3-5 times per day)</li> </ul>
<b>Cleaning</b>	<ul style="list-style-type: none"> <li>Smooth internal and external design, easy to clean</li> </ul>	<ul style="list-style-type: none"> <li>Turntable structure leads to accumulation of residues, difficult to clean</li> </ul>
<b>Capability</b>	<ul style="list-style-type: none"> <li>Heating not compromised by large capacity</li> </ul>	<ul style="list-style-type: none"> <li>Can accommodate limited amount of food</li> </ul>

## Electric Convection Ovens

Butler infra-red stone ovens are designed to churn out great tasting pizzas with amazing consistency.

- High quality pizza stone accommodates 4 pizzas
- Temperature control allows users to set any constant temperature for baking pizzas
- A peep-in window offers a view of the pizzas while being baked
- Insulated chamber



ECO-28

Model	External Dimensions W x D x H (mm)	Cavity Dimensions W x D x H (mm)	Cavity Volume (Litres)	Input Power (W)	Cooking Time (min:sec)	Quantity* (per hour)
MWO-25	511x311x432	327x200x346	25	1550	3:10	19

\*Throughput reflects one piece of Pizza

Specifications are subject to change without prior notice due to continuous product development

Model	Power	Dimensions W x D x H (mm)	Chamber Dimensions W x D x H (mm)	Pans W x D x H (mm)	Temperature Range	Heating Elements	Fans
ECO-28	2.67kW	595*530*570	460*375*360	435*315*5 / 4pans	50°C -300°C	2	2

Voltage: 220-240V/50Hz Specifications are subject to change without prior notice due to continuous product development



EPO-36

## Electric Pizza Stone Ovens

Butler infra-red ovens are designed to churn out great tasting pizzas with amazing consistency.

- ♦ High quality pizza stone accommodates 4 pizzas
- ♦ Temperature control allows users to set any constant temperature for baking pizzas
- ♦ A peep-in window offers a view of the pizzas while being baked
- ♦ Insulated chamber



Model	Power	Dimensions W x D x H (mm)	Electricals	Weight	Cavity Dimensions W x D x H (mm)
EPO-36	3kW	920*690*410	220 - 240V/50Hz	41kg	650*520*170

Specifications are subject to change without prior notice due to continuous product development

## Floor Standing Gas Fryers

This American style floor standing gas-based fryer from Butler is designed with 4 tubes. Each fryer tank is tested for leakage to ensure safety. It comes with a 20 litre tank and two baskets and is ideal for quickly frying chicken, fish, French fries, onion rings and more.

- ♦ 20 litres frypot oil capacity
- ♦ 120,000 Btu/hr.
- ♦ Thermo-tube design
- ♦ Stainless steel frypot, front, door, and backsplash
- ♦ Wire form basket hanger and two fry baskets
- ♦ Each fry basket dimensions (wxdxh): 170x335x280mm
- ♦ Product dimensions (wxdxh): 394x760x885mm
- ♦ Adjustable steel legs



FGF-400

Model	Gas Input Capacity	Each Fry Basket Dimensions WxDxH (mm)	Dimensions W x D x H (mm)	Frypot Oil Capacity
FGF-400	120,000 Btu/hr	170x335x280	394x760x885	20 Liters

Electricals : 220 V Specifications are subject to change without prior notice due to continuous product development

## Countertop Electrical Fryers

These professional fryers from Butler are particularly suited for fast food restaurants. Suitable for frying chips, chicken, fish, onion rings in quick succession using minimal quantities oil.

- ♦ Three models with 4, 6 & 8 litre tank
- ♦ Precise bulb thermostat in stainless steel
- ♦ Heat resistant handles in baskets
- ♦ Removable parts for ease of cleaning

Model	Power	Dimensions (W x D x H in mm)	Volts
EF-4	2 kW	220x390x370	220 V
EF-6	2.5 kW	260x410x285	220 V
EF-8	3.25 kW	260x410x340	220 V

Specifications are subject to change without prior notice due to continuous product development



EF-4, EF-6, EF-8



PG-11E



## Contact - Grills

The Butler Sandwich and Panini Grills cook perfect sandwiches, paninis, steaks or hamburgers retaining all juices and vitamins or grill fish or eggplant in the healthiest possible way.

- ♦ Cast iron plates for even cooking
- ♦ Self-balanced upper plate allows you to adapt the cooking to the food

Model	Power	Temperature Range	Dimensions W x D x H (mm)	Cooking Surface (mm)	Net Weight
CG-11	2.2 KW	50°C-300°C	310x310x200	218 x 230	15 kg
PG-11E	2.8 KW	50°C-300°C	430x310x200	340 x 230	25 kg

Electricals : 220 V Specifications are subject to change without prior notice due to continuous product development

## Crepe Makers

High quality crepe machines for delicious, moist, golden pancakes, buckwheat cakes, Indian tempura, sweet chillas and the like. The cast iron plate is perfectly smooth and facilitates a direct heat transfer. A slight degreasing of the pancake or crepe would ensure a honeycombed, golden crepe with no caramelization or glazing.

- ♦ Even cooking with minimal use of oil
- ♦ Ideal for outdoor or kiosk use



CM-01

Model	Power	Temperature Range	Dimensions (W x D x H in mm)
CM-01	3 KW	50°C-300°C	450x485x235

Electricals : 220 V Specifications are subject to change without prior notice due to continuous product development

## Waffle Bakers

These waffle bakers from Butler come with a electro-mechanical timer and can accept deep-frozen, frozen pre-cooked waffles or freshly made batter for making golden crispy waffles.

- ♦ Quick and even heat spread
- ♦ Temperature control range: 124°C ~ 230°C
- ♦ Time Control Range: 99 Minutes & 50 Seconds ~ 00 Minutes & 00 Seconds
- ♦ The baking plate can revolve 180° baking evenly across both the plates



WB-03



Model	Power	Weight	Temperature Range	Dimensions (W x D x H in mm)	Time Control Range	Baking Plate Revolve
WB-03	2kW	10kg	124°C ~ 230°C	310x380x285	99Mins & 50Sec ~ 00Mins & 00Sec	180°

Voltage: 220-240V/50Hz Specifications are subject to change without prior notice due to continuous product development

## Cone Bakers

Expand your breakfast and dessert menus with these compact and reliable countertop units from Butler that serve up hot, crisp, delicious waffles and waffle cones in just minutes! Preheats to ideal temperature in minutes and provides up to 60 cones per hour.

Model	Power	Temperature Range	Dimensions (W x D x H in mm)
CB-01	1.2 KW	50°C-300°C	280x400x290

Electricals : 220 V Specifications are subject to change without prior notice due to continuous product development



CB-01



Delivered with a mould for making ice cream cones

## Electric Griddle Plates

These steel fry tops from Butler are ideal for cooking dosas, chillas, meat, bacon, fish, sausages, fried eggs, omelettes and a wide variety of Indian style tawa preparations.

- ♦ Homogenous cooking
- ♦ Heavy duty heating element
- ♦ Temperature Control
- ♦ Easy to clean



EGP-550

Model	Power	Temperature Range	External Dimensions W x D x H (mm)	Griddle Dimensions W x D x H (mm)
EGP-550	3kW	50°C-320°C	550x450x230	548x348x 10

Voltage: 220-240V/50Hz Specifications are subject to change without prior notice due to continuous product development

## Electric Bain Mairies

Butler Bain-Mairies come in a GN 1/1 compatible size and can be easily paired together due to their modular and multi-plexable design to create an excellent food warming option to suit the needs of busy catering environments. They can accommodate separate containers (not delivered with the machine).



BM-1/1

Model	Power	Dimensions W x D x H (mm)	Temperature Range
BM-1/1	1.8kW	340x560x280	30°C -85°C

Voltage: 220-240V/50Hz Specifications are subject to change without prior notice due to continuous product development

## Electric Salamanders

Butler salamanders can be used to defrost, brown, grill toasts, gratins, pizzas, onion soups etc. without preheating.

- ♦ High quality cooking
- ♦ Adjustable height (for ES-450)
- ♦ Bakelite handle (for ES-450)
- ♦ Easy to clean



ES-450



ES-610



Model	Power	Temperature Range	Dimensions (W x D x H in mm)
ES-610	1.82~2 kW	50°C-300°C	610x340x280
ES-450	2.8 kW	50°C-300°C	450x450x500

Electricals : 220 V Specifications are subject to change without prior notice due to continuous product development

## Conveyor Toasters

Butler conveyor toaster is designed to toast bread and buns fast - over 300 slices per hour. It works on belt speed and not temperature, to determine the colour of toasting.

- ♦ Robust, stainless steel construction
- ♦ Easy to load guide rack
- ♦ Adjustable belt speed to control browning of toasts
- ♦ Flexibility to choose front or rear discharge
- ♦ Easy to clean and removable Discharge & Crumb trays



CT-300



Model	Power	Dimensions W x D x H (mm)	Chamber Dimensions W x D x H (mm)	Temperature Range	Heating Elements	Fans
CT-300	2.67kW	595x530x570	460x375x360	50°C -300°C	2	2

Voltage: 220-240V/50Hz Specifications are subject to change without prior notice due to continuous product development

## Pop-up Toasters

The 6 slot pop-up toaster from Butler is built to suit the heavy duty needs of busy kitchens and restaurants. It comes with a bottom crumb tray for bread particles.

- ♦ 6 slot toaster
- ♦ Stainless Steel construction
- ♦ Rounded edge design
- ♦ 5 minute timer



POP-06

Model	Power	Electricals	Dimensions (W x D x H in mm)
POP-06	3.24 kW	220V / 50Hz	460x210x225

Specifications are subject to change without prior notice due to continuous product development

## Vegetable Preparation Machines

The VPM-120 is a compact vegetable preparation machine from Butler with a production capacity of 120 kg/hour.

- ♦ Motor base : 250W / 1 phase
- ♦ Dimensions (W x D x H) : 275 x 580 x 455 mm
- ♦ Disc diameter: 204 mm
- ♦ Net Weight: 30 kgs
- ♦ Delivered with metal bowl and lid; removable lid equipped with two hoppers – small and large



VPM-120

**C Discs:** For slicing & shredding varied thicknesses



**AS Disc:** For shredding vegetables and fruits



**AS Discs:** For chips, vegetables and fruits



**M Discs:** For vegetable salads, cubes, etc. Must be used with a C Disc



**P Discs:** For finely grating cheese, bread-crumbs, almonds etc.



## Meat Slicers

This 10" semi-automatic meat slicer from Butler comes with a high quality bearing design that allows for a smooth operation. It is easy to clean, is durable and has a firm-grip base.

- ♦ Blade diameter : 250 mm / 10"
- ♦ Cutting thickness : 0~10 mm
- ♦ Dimensions (W x D x H) : 390 x 470 x 380 mm
- ♦ Power : 320W
- ♦ Electricals : 220V / 50 Hz. / 1 Ph.
- ♦ Weight : 15.5 Kgs



250 ES-10

## Meat Mincers

TC-8 is a durable meat mincer from Butler and has an all stainless steel construction. It is easy to operate & clean; conforms to international sanitation standards and comes with easy to replace, circular orifice knife and cross-blades.

- ♦ Capacity : 80 kgs /hour
- ♦ Dimensions (W x D x H) : 370 x 230 x 470 mm
- ♦ Power : 350W
- ♦ Electricals : 220V / 50 Hz. / 1 Ph.
- ♦ Weight : 20 Kgs



TC-8



## Flat Packed Stainless Steel Furniture

The knocked down stainless steel furniture range from Butler perfectly complements its cooking and food preparation equipment. Built in solid 0.8mm stainless steel, it is easy to install and aims to comprehensively address the equipment needs of commercial kitchens.



### Work Tables with Splash Back

- ◆ Flat packed
- ◆ Easy to install
- ◆ Four side table support for stability

Model	Description	Dimensions (WXDXH) mm
WT.1200SB	Work Table with Splash Back - 1200 mm	1200*700*850+100

Specifications are subject to change without prior notice due to continuous product development

### Work Tables

- ◆ Flat packed
- ◆ Easy to install
- ◆ Four side table support for stability

Model	Description	Dimensions (WXDXH) mm
WT.1200	Work Table - 1200 mm	1200*700*850

Specifications are subject to change without prior notice due to continuous product development



### Stands with 4 shelves

- ◆ Flat packed
- ◆ Easy to install
- ◆ Holes for air ventilation
- ◆ Each shelf designed to accommodate a load 80 kg

Model	Description	Dimensions (WXDXH) mm
4S.1000	Stand with 4 shelves - 1000mm	1000*500*1800
4S.1200	Stand with 4 shelves - 1200mm	1200*500*1800
4S.1400	Stand with 4 shelves - 1400mm	1400*500*1800
4S.1500	Stand with 4 shelves - 1500mm	1500*500*1800
4S.1800	Stand with 4 shelves - 1800mm	1800*500*1800

Specifications are subject to change without prior notice due to continuous product development



### Single Layer Wall Shelves

- ◆ Flat packed
- ◆ Easy to install
- ◆ Adjustable shelf height

Model	Description	Dimensions (WXDXH) mm
1S.1000	Single Layer Wall Shelf -1000mm	1000*300*600
1S.1200	Single Layer Wall Shelf -1200mm	1200*300*600

Specifications are subject to change without prior notice due to continuous product development



Marketed in India by:

TRUFROST COOLING PVT. LTD.

Corporate Office: 1214 & 1215, 12th Floor, Tower B, Emaar Digital Greens, Golf Course Extn. Road, Sector 61, Gurugram - 122102

Tel: +91-124-4246560 Email: info@trufrost.com www.trufrost.com

Ahmedabad : 7303890589  
 Bengaluru : 7303890588, 8105258810  
 Chennai : 7303890587  
 Chhattisgarh : 7303890586  
 Delhi/NCR : 8448759200, 8448445701

Hyderabad : 7303890582, 9930093078  
 J & K / Himachal : 8448319200  
 Kolkata : 7303890590  
 Maharashtra/Goa : 7303890586  
 Mumbai : 7303890583

Orissa : 7303890582  
 Punjab / Haryana : 8448319200  
 Rajasthan : 9116116765, 8448759200  
 Uttar Pradesh : 8448759200  
 Uttarakhand : 8448319200

AUTHORISED DEALER / DISTRIBUTOR