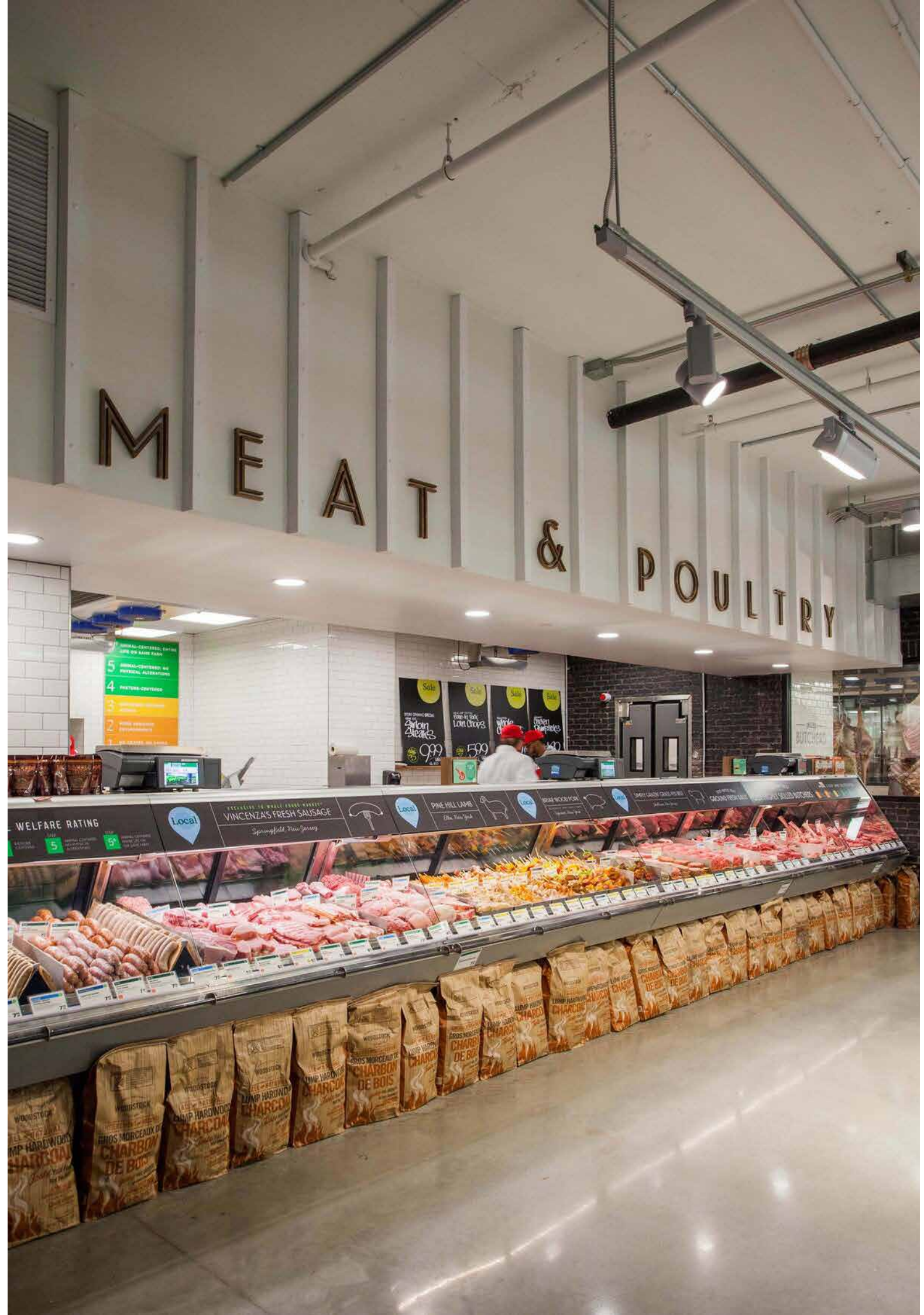


## Cutting edge solutions for butcheries





Presented in the pages ahead is a world class range of equipment from Trufrost and Butler for butcheries, meat and seafood stores. Built to the highest standards of hygiene, they are reliable and perform tirelessly to enable your butchery running smoothly.







# CONTENTS

Meat Slicers	4
Meat Mincers	6
Bone Saw Machines	8
Sausage Fillers	9
Hamburger Patty Press	10
Bowl Cutters	12
Serve Over Counters	14
Self Serve Counters	16
Fish Counters	18
Traditional Island Freezers	21
Visi Coolers & Freezers - Premia Series	22
Traditional Visi Freezers	23
Flake Ice Machines	27
Glass Top Freezers and Chest Freezers	30
Professional Refrigeration Products	37
Coldrooms	38
Flat Packed Stainless Steel Furniture	39

# Meat Slicers

These semi-automatic meat slicers from Butler come with high quality bearing design that allows for a smooth operation. The handle is safe and convenient to use when in operation. They are easy to clean, are durable and have a firm-grip base.



SL 250 ES-10



## Technical Specifications

Model	Power	Dimensions W x D x H (mm)	Blade diameter	Cutting thickness	Net Weight
SL 250 ES-10	320W	390 x 470 x 380	250mm/10"	0~10 mm	15.5 kgs

Voltage: 220-240V/50Hz

Specifications are subject to change without prior notice









TC-8

## Meat Mincers

These durable meat mincers from Butler come with an all stainless steel construction. They are easy to operate & clean; confirm to international sanitation standards. All models are loaded with an easy to replace, circular orifice knife and cross-blades.

### Technical Specifications

Model	Power	Dimensions W x D x H (mm)	Capacity	Net Weight
TC-8	350W	370 x 230 x 470	80 kgs /h	20 kgs
Voltage: 220-240V/50Hz		Specifications are subject to change without prior notice		









# Bone Saw Machines

The Bone Saws from Butler are designed to cut bones,frozen meat,fish etc.,and are easy to operate & clean. J-210 is a countertop model that uses high quality stainless steel saw blades to ensure smooth cutting. So is the working table and parts that come in touch with the food which confirms to international sanitation standards. It comes with a built-in waterproof safety device that automatically stops the machine if the outer cover is open.



J-210

## Technical Specifications

Model	Power	Dimensions WxDxH (mm)	Working Table Size WxDxH (mm)	Blade Size WxDxH (mm)	Rotational Speed	Cutting Height	Cutting Thickness	Net weight
J-210	650W	520x470x820	500x380	1650x16x0.5	1420 RPM	0~180mm	5~155mm	40Kg

Voltage: 220-240V/50Hz

Specifications are subject to change without prior notice due to continuous product development





Four stainless steel stuffing funnel sizes (16, 22, 30, and 38mm)



TV-7L

## Sausage Fillers

These vertical Sausage Fillers from Butler are designed to be used in restaurant kitchens and for food processing and are easy to operate & clean. The body is made in stainless steel and confirms to international sanitation standards. Strong gear and a double-thick stuffing rack, makes them powerful and durable. They come with two speed regulations for increased efficiency and convenience.

## Technical Specifications

Model	Dimensions W x D x H (mm)	Capacity	Net Weight
TV-7L	850 x 320 x 290	7L	16 kgs

Voltage: 220-240V/50Hz  
Specifications are subject to change without prior notice



# Hamburger Patty Press

The Butler Manual Hamburger Patty Press has a simple, functional design. It is designed to be used in restaurant kitchens and for food processing. The whole body is made of aluminium and the patty bowl is made in stainless steel confirming to international sanitation standards. The platform is firm and durable making the patty press easy to operate and clean.



SL-H100

## Technical Specifications

Model	Patty Diameter	Dimensions W x D x H (mm)	Net Weight
SL-H100	110mm	230 x 165 x 280	4.6 kgs

Voltage: 220-240V/50Hz  
Specifications are subject to change without prior notice





# Bowl Cutters

The Bowl Cutters from Butler are designed to cut and chop fresh meat as well as vegetables into pieces within minutes, whilst allowing them to retain their nutrition and taste. The blade and 6 litre food bowl are made in high quality stainless steel that confirms to international sanitation standards. The food plate is easy to remove, clean and install. The high speed, S shaped blade enhances efficiency and saves labour and time. The machine is designed to stop when the bowl cover is open. It has overload and overheat protection for increased safety and a waterproof level of IPX4.



SL-400



## Technical Specifications

Model	Power	Dimensions W x D x H (mm)	Blade Rotational Speed	Plate Rotational Speed	Plate Diameter	Net Weight
SL-400	400W	670x480x410	1460 RPM	20 RPM	400mm	36 kgs

Voltage: 220-240V/50Hz      Specifications are subject to change without prior notice



## Serve Over & Self Service Counters





SOC 2590

## Serve Over Counters - Plug-in

Trufrost presents stylish serve over counters for display of a variety of foodstuff including delicatessens, dairy products, sausages, meat and poultry that ensure maximum visibility in a pleasing manner. The front glass can be lifted for cleaning. They also come with an additional refrigerated storage underneath which can be accessed through specially provisioned small door/s at the rear.



Openable front glass



Rear storage





## Key Features

- ◆ Stylish display for dairy products, sausages, packaged meats & poultry and delicatessens
- ◆ High performance compressor
- ◆ Easy to clean, stainless steel platform on the top rear portion
- ◆ Ensures maximum visibility to the products presented
- ◆ LED lighting
- ◆ Rear storage with 1/2 doors in different models







## Self Serve Counters

These refrigerated self-service counters from Trufrost are designed to store and display deli & pastry products, sausages, packaged meats & dairy products and delicatessens. Thanks to a contemporary and functional design, they respond effectively to the multiple demands of retailers.





## Key Features

- ◆ High performance compressor
- ◆ East to clean, stainless steel platform on the top rear portion
- ◆ Ensures maximum visibility to the products presented
- ◆ LED lighting



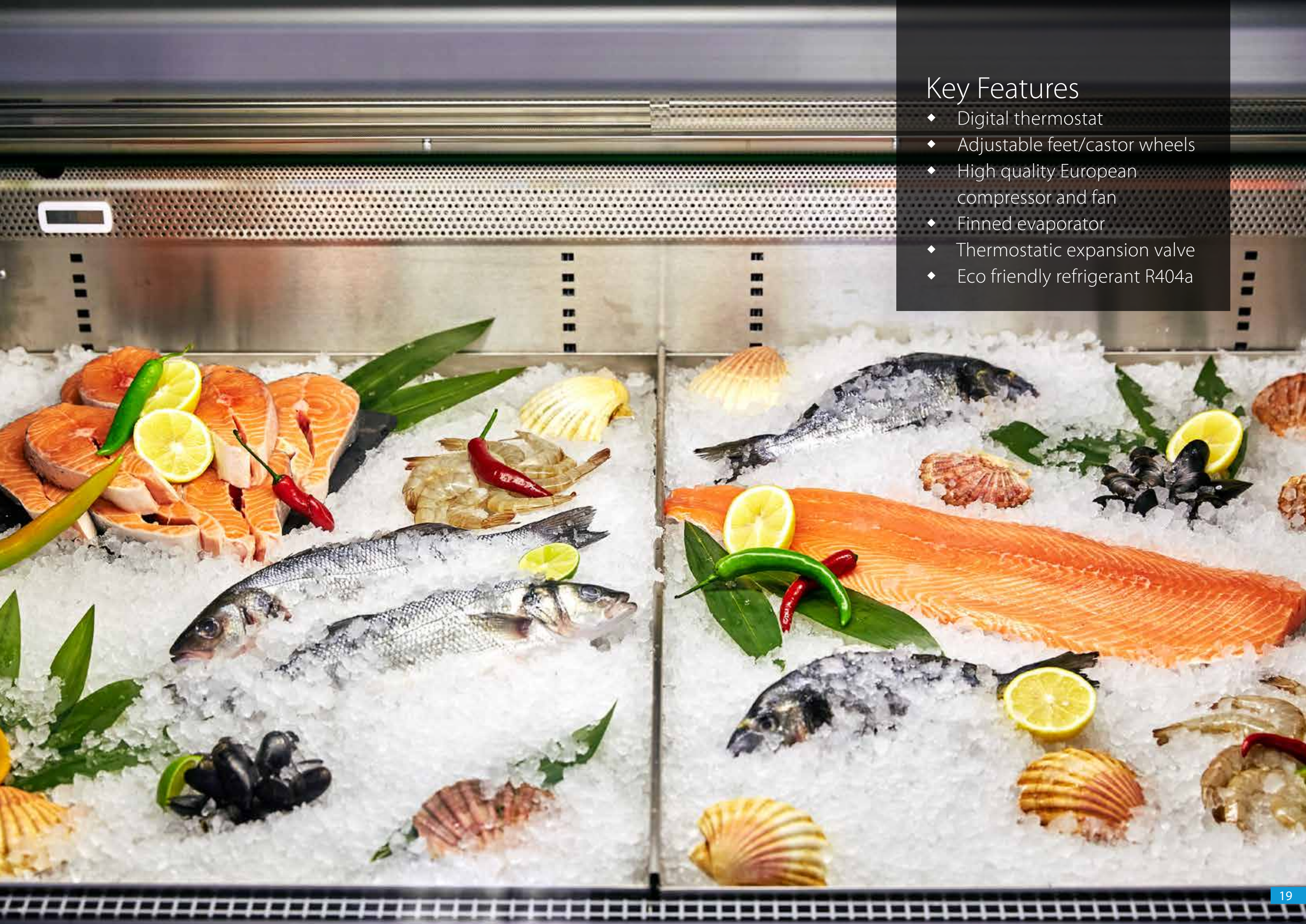
## Stainless Steel Fish Counters

Built on a platform of stainless steel AISI 304, Trufrost fish counters are perfect for displaying fresh fish. They are designed for providing optimal chilling during display only, not as a storage vessel for continuous use. All contents should be removed and placed into refrigerated storage during out hours – the counter being clear for cleaning and sanitising prior to restocking, the next day.



## Key Features

- ◆ Digital thermostat
- ◆ Adjustable feet/castor wheels
- ◆ High quality European compressor and fan
- ◆ Finned evaporator
- ◆ Thermostatic expansion valve
- ◆ Eco friendly refrigerant R404a





Technical Specifications - Serve Over & Self Serve Counters



Product	Model	Dimensions wxdxh (in mm)	Temperature range at 25 °C, 60%RH	Power	Refrigerant	Rated Current	Shelves	No. of Rear Doors
Serve Over Counters	SOC-1590	1590x918x1230	+2°C ~ +8°C	500 W	R404a	6.0A	1	1
Serve Over Counters	SOC-2590	2590x918x1230	+2°C ~ +8°C	732 W	R404a	6.0A	1	2
Self Serve Counters	SSC-1350	1350x1100x910	-2°C ~ +2°C	620 W	R404a	3.8A	-	-
Self Serve Counters	SSC-1980	1980x1100x910	-2°C ~ +2°C	676 W	R404a	4.0A	-	-
Stainless Steel Fish Counters	SSFC-1930	1930x1130x900	-5°C ~ 0°C	600W	R404a	6.0A	-	-

Electricals: 220V/50Hz./Single Phase      Specifications are subject to change without prior notice due to continuous product development





# Traditional Island Freezers

Trufrost Island Freezers are a retailer’s delight and come with fully loaded baskets for easy access & convenient segregation of frozen food. IL 450 and IL 660 come with 4 baskets each.



## Technical Specifications

Specification	Island Freezers	
	IL-450	IL-660
Gross Volume (Litres)	450	660
w*d*h (inches)	70x29x33	74x32x34
Temperature Range	≤-18°C	≤-18°C
Power (W)	355	380
Refrigerent	R290	R134a
Lock	Yes	Yes
Defrost	Manual	Manual
No. of Lids / Doors	2	2
No. of Baskets	4	4
Wheels / Castors	Yes	Yes

Electricals: 220V/50Hz/1 Phase  
Specifications are subject to change without prior notice due to continuous product development



## Visi Coolers - Premia Series (With top mounted compressors)

These Trufrost Premia Series plug-in type 2 glass door upright Coolers come with top mounted compressors. They provide an ultra rich and pleasing 'top to bottom' view of the displayed foodstuff – be it ice creams or any other packaged food. The cabinet interiors come with LED lights to enhance the quality of display.



VC-1225 Premia  
VC-1250 Premia

## Key Features

- Forced air circulation
- Adjustable shelves
- Interior LED lights
- Universal wheels, front with brake
- Double pane glass including Low E in Visi Coolers
- Self Closing doors
- Self evaporating drip tray
- Low-maintenance condenser
- Standard ambient for Visi Coolers +35°C at 65%RH

## Technical Specifications



Model	Volume (L)	Door type	Shelves	Power	Dimensions (wxdxh) mm	Temperature range	Refrigerant	No. of Compressors
VC-1225 Premia	1225	2 Hinge	10	420W	1215x710x2050	+1°C ~ +10°C	R134a	1
VC-1250 Premia	1250	2 Hinge	10	412W	1260x750x2092	+1°C ~ +10°C	R134a	1

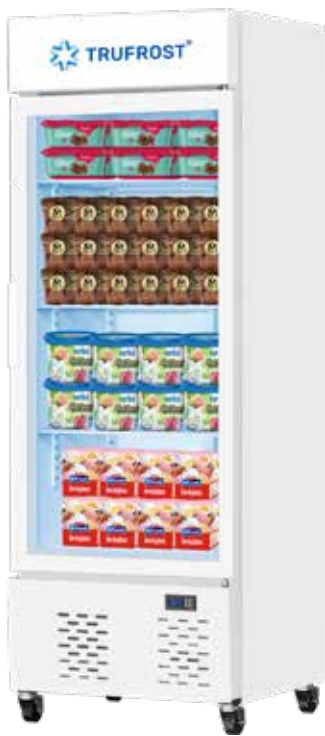
Electricals: 220V/50Hz./Single Phase

Specifications are subject to change without prior notice due to continuous product development



## Traditional Visi Freezers

Trufrost upright visi freezers are known for their reliability and provide a pleasing view of the displayed foodstuff – be it ice creams or any other packaged frozen food. The VF-400 and VF-1000 are among our fast selling models. They have a ventilated cooling system with automatic defrost and are fitted with LED lights to enhance the quality of display.



VF-375NF



VF-400



VF-1000

New upgraded model  
with 2 compressors





Technical Specifications - Visi Freezers



Specification	Gross Volume (Litres)	w x d x h (inches)	Temperature Range	Power (w)	Lock	Defrost	No. of Lids / Doors	No. of shelves	Interior Light	Wheels / Castors	No. of Compressors	Refrigerant
VF-1000NF	950	48 x 28 x 78	-18°C ~ -22°C	1250	Yes	Automatic	2	10	Yes / 2LEDs	Yes	2	R404a
VF-400NF	400	26 x 28 x 78	-18°C ~ -22°C	570	Yes	Automatic	1	5	Yes / 2LEDs	Yes	1	R404a
VF-375NF	375	23 x 24 x 80	-18°C ~ -22°C	760	Yes	Automatic	1	4	Yes / 1LEDs	Yes	1	R404a

Electricals: 220V/50Hz/1 Phase      Specifications are subject to change without prior notice due to continuous product development  
Working condition for open chillers/glass door freezer is class 3 (Room Temp. 25°C and 60%RH)





## Flake Ice

Flake ice is granular type of ice, perfect for display of fresh fish in supermarkets or by meat/fish shops for moisturising and cooling the displayed foodstuff to perfection.





## Flake Ice Machines

Trufrost Flake Machines with self contained bins come in production capacities ranging from 20 - 200kg per day and the Modular Ice Flake Machines are available in production capacities of 500 & 1000 kg per day. They are known for their low water and energy consumption.



IF-20



IF-50, IF-70



IF-120, IF-200



IF-500  
on ISB 125 Bin



IF-1000  
on ISB 350 Bin





# Technical Specifications - Flake Ice Machines



Model	Rated Capacity / 24 hrs.*	Ice Storage Capacity	Cube Shape / Size	Refrigerant	Power (w)	Dimensions wxdxh (mm)	Compatible Storage Bin
IF 20	20 kgs.	10 kgs.	Granular Flakes	R 134a	280	330*470*605	-
IF 50	50 kgs.	15 kgs.	Granular Flakes	R 134a	380	400*540*700	-
IF 70	70 kgs.	25 kgs.	Granular Flakes	R 134a	460	400*510*845	-
IF 120	120 kgs.	40 kgs.	Granular Flakes	R 134a	550	500*611*950	-
IF 200	200 kgs.	60 kg	Granular Flakes	R134a	1040	650*740*1100	-
IF 500	500 kgs.	125 kg	Granular Flakes	R404a	2000	760*830*1950	ISB 125
IF 1000	1000 kgs.	315 kg	Granular Flakes	R404a	4000	1227*973*2195	ISB 350

\* At 10°C incoming water and 10°C air temperature                      Electricals: 220V/50Hz./Single Phase

Height & width for IF 500/1000 is with the suggested storage bin

Specifications are subject to change without prior notice due to continuous product development



ISB 125



ISB 350

## Specifications - Storage Bins

Model	Ice Storage Capacity	Dimensions wxdxh (mm)	Compatible with
ISB-125	125 kgs.	760*830*1150	IF-500
ISB-350	350 kgs.	1227*973*1255	IF-1000



## Glass Top Freezers - Deluxe series

These Trufrost Flat Glass Freezers add a new dimension to the routine glass tops available in the market. They come with LED light to enhance the product display - feature that is a retailer's delight. GT 440 Dlx and GT 650 Dlx come with 4 and 6 fully loaded baskets respectively (2 of which are QDI baskets), for easy access & convenient segregation of the displayed items. They come with an extra thick 75 mm insulation and an elegant aluminium door frame that contrasts well with the white freezer body.



### Models available

- GT-440 Dlx (with 4 baskets)
- GT-650 Dlx (with 6 baskets)



# Introducing Glass Top Freezers that **stand out**



LED Light



Full basket



Prepainted  
aluminum plate

Aluminium alloy  
door frame



Double row Casters



Temperature display

## Key Features

- New style flat sliding glass lid
- Fully Automatic operation
- 75 mm thickness insulation
- Exterior white finish
- Aluminum door frame
- Adjustable thermostat
- Main power indicator
- Defrost water drain hole
- Full basket as standard
- Interior LED light as standard
- Four caster wheels
- Environmentally friendly





CFC  
Free



Large Cooling  
Power

## Flat Glass Top Freezers

Trufrost Flat Glass Freezers are a retailer's delight and come with fully loaded baskets for easy access & convenient segregation of frozen food.



### Models available

- GT-100 (with 1 basket)



### Models available

- GT-255 (with 1 basket)
- GT-355 (with 4 baskets)
- GT-455 (with 4 baskets)
- GT-555 (with 4 baskets)







## Curved Glass Top Freezers

Trufrost Curved Glass Freezers are a retailer's delight. GTC 330 and 450 come with 3 baskets and GTC 625 has 9 baskets with 18 separators for easy access & convenient segregation of frozen food.



GTC 330 (with 3 baskets)  
GTC 450 (with 5 baskets)



GTC 625 (with 9 baskets with 18 Separators)

# Technical Specifications



Specification	Flat Glass Top Freezers			Flat Glass Top Freezers				Curved Glass Top Freezers		
	GT-440 DLX	GT-650 DLX	GT-100	GT-255	GT-355	GT-455	GT-555	GTC-330	GTC-450	GTC-625
Gross Volume (Litres)	400	600	100	230	330	430	530	330	430	610
w*d*h (inches)	50x27x34	71x27x34	23x21x33	32x27x31	44x27x31	55x27x31	66x27x31	41x26x35	50x27x34	71x27x34
Temperature Range	≤-18°C	≤-18°C	≤-20°C	+5°C ~ -27°C	+5°C ~ -27°C	+5°C ~ -27°C	+5°C ~ -27°C	≤-20°C	≤-20°C	≤-20°C
Power (W)	210	252	133	290	320	345	395	215	200	240
Refrigerent	R290	R290	R134a	R134a	R290	R290	R290	R134a	R290	R290
Lock	Yes	Yes	Yes	Yes	Yes	Yes	Yes	Yes	Yes	Yes
Defrost	Manual	Manual	Manual	Manual	Manual	Manual	Manual	Manual	Manual	Manual
No. of Lids / Doors	2	2	2	2	2	2	2	2	2	2
No. of Baskets	4 (2 standard + 2 QDI)	6 (4 standard + 2 QDI)	1	1	4	5	5	3	5	9
Wheels / Castors	4	6	Yes	Yes	Yes	Yes	Yes	Yes	Yes	Yes

Electricals: 220V/50Hz/1 Phase      Specifications are subject to change without prior notice due to continuous product development







## Conventional 2-in-1 Convertible Freezers / Chillers

Trufrost 2-in-1 hard top chest freezers conveniently double up as chillers at the turn of a knob and are available in a wide variety of sizes ranging from 100 to 800 litres to suit every conceivable need. You can also choose between single, double and three lid variants.



### Single Lid Models

- CF-110
- CF-220 Dlx.
- CF-222
- CF-300 Dlx.
- CF-333



### Double Lid Models

- CF-333 2D
- CF-400 2D  
(not convertible into chiller)
- CF-444 2D
- CF-500 2D
- CF 500 2D (New)

- CF 550 2D (New)
- CF 550 2D Dlx.
- CF 555 2D
- CF 700 2D
- CF 700 2D (New)
- CF 800 2D



### Three Lid Models

- CF-720 3D

# Technical Specifications - Chest Freezers



Model	Gross Volume (L)	w*d*h (mm)	Temperature Range	Power (W)	Refrigerent	Lock	Defrost	No. of Lids / Doors	No. of Baskets	Wheels / Castors
CF-110	100	560*595*790	+2°C -20°C	110	R600a	Yes	Manual	1	1	Yes
CF-220 Dlx	200	860*540*835	+2°C -20°C	103	R 600a	Yes	Manual	1	1	Yes
CF-222	220	815*720*845	-18°C ~ -24°C (F) +0°C ~ +10°C (C)	154	R 600a	Yes	Manual	1	1	Yes
CF-300 Dlx	276	1080*600*835	+2°C -20°C	115	R 134a	Yes	Manual	1	1	Yes
CF-333	330	1115*720*845	-18°C ~ -24°C (F) +0°C ~ +10°C (C)	295	R 290	Yes	Manual	1	1	Yes
CF-333 -2D	330	1115*720*845	-18°C ~ -24°C (F) +0°C ~ +10°C (C)	295	R 290	Yes	Manual	2	1	Yes
CF-400-2D	400	1304*670*830	≤-20°C	270	R 134a	Yes	Manual	2	2	Yes
CF-444-2D	440	1395*720*845	+2°C -20°C	295	R 290	Yes	Manual	2	2	Yes
CF-500-2D	470	1523*725*842	+2°C -20°C	253	R 134a	Yes	Manual	2	2	Yes
CF-550-2D Dlx	550	1683*670*880	+2°C -20°C	300	R 290	Yes	Manual	2	1	Yes (6)
CF-555-2D	550	1685*720*845	-18°C ~ -24°C (F) +0°C ~ +10°C (C)	395	R 290	Yes	Manual	2	2	Yes
CF-700-2D	680	1843*725*842	+2°C -20°C	305	R 134a	Yes	Manual	2	2	Yes
CF-700-2D (New)	680	1810*755*840	+2°C -20°C	300	R 600a	Yes	Manual	2	2	Yes
CF-800-2D	800	2000*740*850	+2°C -20°C	330	R 290	Yes	Manual	2	2	Yes
CF-720-3D	700	1810*755*840	+2°C -20°C	320	R 600a	Yes	Manual	3	2	Yes

Electricals: 220V/50Hz/1 Phase

Specifications are subject to change without prior notice due to continuous product development





# Tireless performers

## Refrigerated Reach in Cabinets

Trufrost Reach-Ins are available as Chillers or Freezers and come with 1, 2 or 4 door options. They come in 600 and 1200 litre capacities. Being vertical front door opening machines, they help save on precious space.



Models suitable for coffee shops



G 600 TN



G 600 TNM, G 600 BTM



G 1200 TNM, G 1200 BTM

## Refrigerated Work Tables

Trufrost refrigerated work tables, mounted on heavy duty lockable castors, combine storage and preparation thereby enhancing the effectiveness of the users. These are available as Chillers or Freezers and come with 2 and 3 door options.



G2100TN, G2100BT



G3100TN, G3100BT



S 901



## Technical Specifications



Product	Model	Cooling System	Product Dimensions W*D*H (mm)	Volume (Litres)	Product Weight (Kg)	No. of Doors / Drawers	No. of Shelves	Temperature Range (°C)	Refrigerant	Input Power (W)
Reach In Refrigerators	G 600 TN	Ventilated	680*710*2010	600	83	1	5	2 ~ +10	R 134a	305
	G 600 TNM	Ventilated	680*710*2010	600	115	2	3	2~+10	R134a	220
	G 1200 TNM	Ventilated	1340*710*2010	1200	152	4	6	2~+10	R134a	465
Reach In Freezers	G 600 BTM	Ventilated	680*710*2010	600	126	2	3	-22~-18	R404A	615
	G 1200 BTM	Ventilated	1340*710*2010	1200	161	4	6	-22~-18	R404A	580
Undercounter Refrigerators	G 2100 TN	Ventilated	1360*600*850	228	83	2	2	2~+10	R134a	240
	G 3100 TN	Ventilated	1795*600*850	339	102	3	3	2~+10	R134a	230
	S 901	Static	900*700*850	240	69	2	2	+2~+10	R134a	180
Undercounter Freezers	G 2100 BT	Ventilated	1360*600*850	228	92	2	2	-22~-18	R404A	615
	G 3100 BT	Ventilated	1795*600*850	339	114	3	3	-22~-18	R404A	615

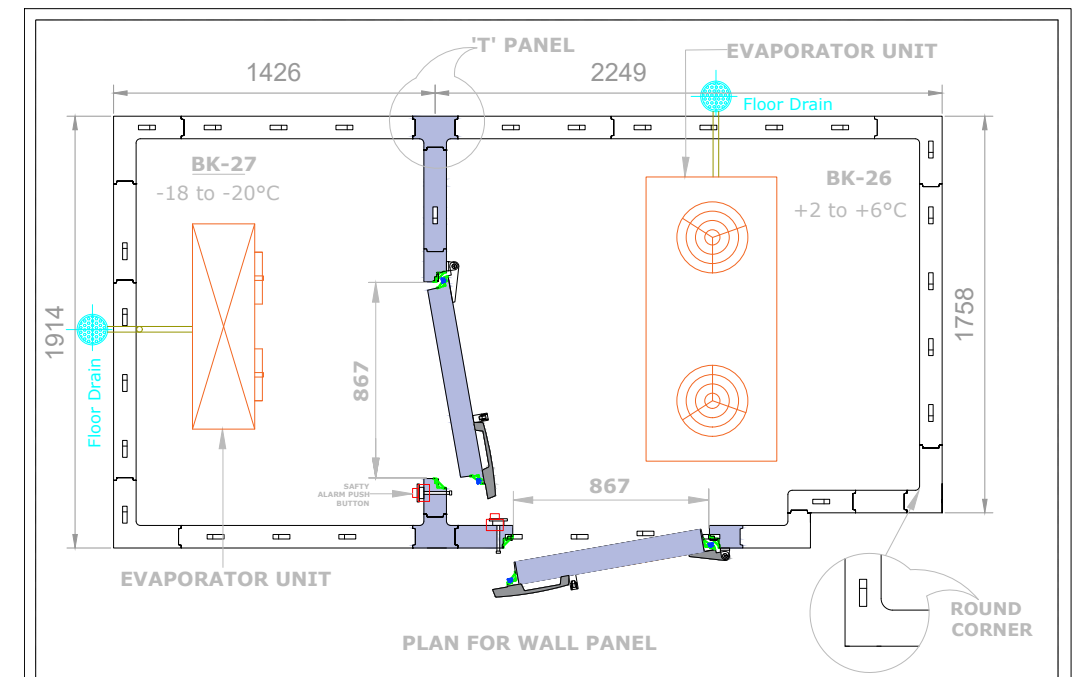
Electricals: 220V/50Hz/1 Phase      Specations are subject to change without prior notice due to continuous product development  
# Please refer to infomation given next to the product picture.



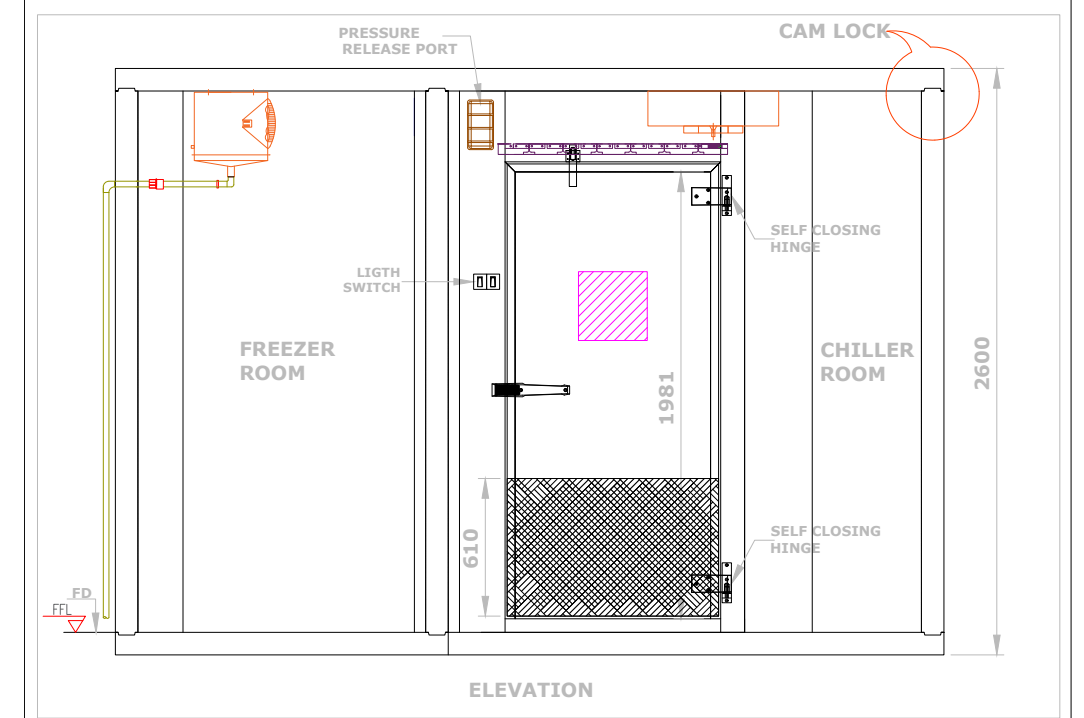
# Coldrooms

Team Trufrost has an expertise in design, supply, installation and after-service for your coldroom needs. Having worked extensively in the cold chain industry for over 3 decades, we've devoted ourselves to creating products and solutions that are extremely dependable. We specialize in preservation & storage of bakery ingredients and products.

For technical specifications please refer to our separate catalogues on [coldrooms](#).



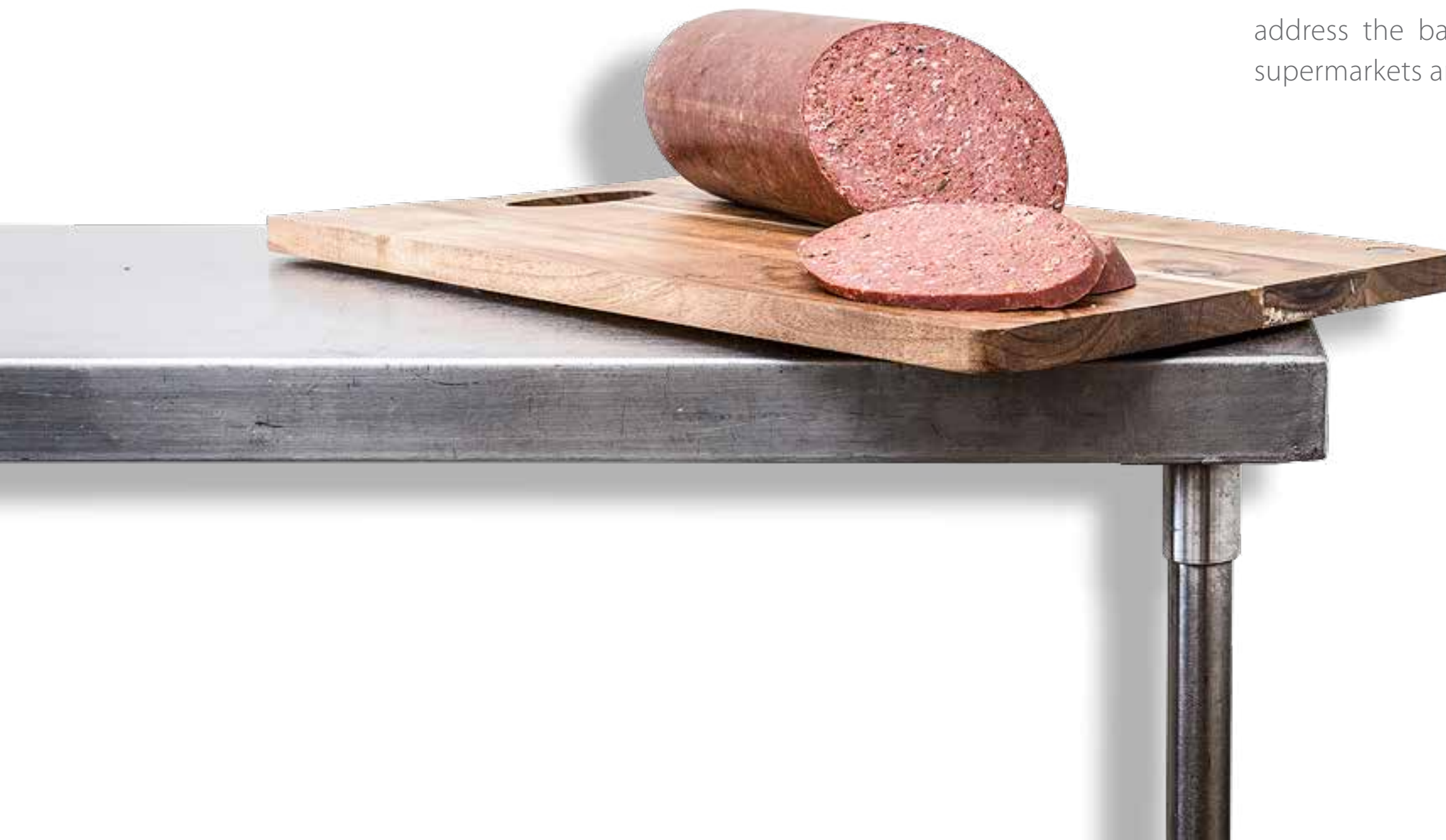
## COMBO COLD ROOMS FOR BAKERY KITCHEN





## Flat Packed Stainless Steel Furniture

The knocked down stainless steel furniture range from Butler perfectly complements its cooking and food preparation equipment. Built in solid 0.8mm stainless steel, it is easy to install and aims to comprehensively address the back-end equipment needs of supermarkets and food retail stores.





## Work Tables with Splash Back

- ◆ Flat packed
- ◆ Easy to install
- ◆ Four side table support for stability

Model	Description	Dimensions (WXDXH) mm
WT.1200SB	Work Table with Splash Back - 1200 mm	1200*700*850+100

Specifications are subject to change without prior notice



## Work Tables

- ◆ Flat packed
- ◆ Easy to install
- ◆ Four side table support for stability

Model	Description	Dimensions (WXDXH) mm
WT.1200	Work Table - 1200 mm	1200*700*850

Specifications are subject to change without prior notice



## Stands with 4 shelves

- ◆ Flat packed
- ◆ Easy to install
- ◆ Holes for air ventilation
- ◆ Each shelf designed to accommodate a load 80 kg

Model	Description	Dimensions (WXDXH) mm
4S.1000	Stand with 4 shelves - 1000mm	1000*500*1800
4S.1200	Stand with 4 shelves - 1200mm	1200*500*1800
4S.1400	Stand with 4 shelves - 1400mm	1400*500*1800
4S.1500	Stand with 4 shelves - 1500mm	1500*500*1800
4S.1800	Stand with 4 shelves - 1800mm	1800*500*1800

Specifications are subject to change without prior notice



## Single Layer Wall Shelves

- ◆ Flat packed
- ◆ Easy to install
- ◆ Adjustable shelf height

Model	Description	Dimensions (WXDXH) mm
1S.1000	Single Layer Wall Shelf -1000mm	1000*300*600
1S.1200	Single Layer Wall Shelf -1200mm	1200*300*600

Specifications are subject to change without prior notice



Serving happiness





#### TRUFROST COOLING PVT. LTD.

**Corporate Office:** 1214 & 1215, 12th Floor, Tower B, Emaar Digital Greens, Golf

Course Extn. Road, Sector 61, Gurugram - 122011, India

**Tel:** +91-124-4246560 **Email:** info@trufrost.com **www.trufrost.com**

**UAE:** +971-54-557-9395, +971-55-676-1323, **Email:** middleeast@trufrost.com



Andhra/Telangana : 9319391543  
Chennai : 7303890587  
Chhattisgarh : 7303890590  
Coldroom (North): 8448445701, 7303196612  
Coldroom (South): 9319399771, 7303890585  
Delhi/NCR : 8448759200, 7303890582  
Goa : 7303890586

Gujarat : 9319579748  
Assam/North-East : 9319391542, 9667795491  
J & K / Himachal : 8448319200, 9319399772  
Karnataka : 7303890588  
Kerala : 7303890587  
Maharashtra : 7303890586  
Mumbai : 7303196614, 9319579748

Orissa : 7303890590, 9667795491  
Punjab / Haryana : 8448319200, 9319399772  
Rajasthan : 9116116765  
UP : 7303196607  
MP : 9319399770  
Uttarakhand : 8448319200, 9319399772  
West-Bengal/Bihar : 7303890590, 9667795491

Reach-in Cabinets • Undercounter Refrigeration • Blast Freezers • Ice Cubers • Flake Ice Machines • Wine Coolers • Wine Walls • Back Bars • Bottle Coolers • Draught Beer Systems  
Soft Serve Freezers • Granita Dispensers • Juice Dispensers • Hot Chocolate Dispensers • Confectionery Display Cases • Chest Freezers & Coolers • Minibars • Multideck Chillers  
Deli Counters • Visi Coolers • Visi Freezers • Walk-in Coldrooms • Cold Storages • Pre-Coolers • Ultra Low Freezers • Pharmacy Freezers & Coolers • Blood Bank Refrigeration • Mobile Coolers  
Air Sanitisers • Crockery & Cutlery Sterilisers • UV Warm Wipe Sterilisers • Ozone Fruits & Vegetables Disinfectors • Foot Press Water Dispensers





[www.trufrost.com](http://www.trufrost.com)