

TRUFROST & BUTLER

USER MANUAL

Countertop Food Display Warmer

FDW-3 x 660

Warning:

- Product use must comply with the instruction manual, if there is any violation of operation, there is an accident, the factory is not responsible.
- The product must be used before safety grounding.
- It is strictly prohibited to use water spray pipe for washing!
- This factory product design novel and unique, beautiful shape, arc shape, two layers of display, surrounded by transparent glass, with optional temperature, temperature display, temperature uniformity, and a humidity compensation and keep the food's moisture.

1. Performance

Thermal insulation, moisture.

2. The main technical parameters

Model	Voltage (V)	Frequency (Hz)	Power (KW)	Outline dimension (mm)
FDW-3X660	220	50 Hz	1.4	660*480*640

3. Using Guidance:

- The product must be safely grounded before use!
- The voltage must be in conformity with the rated voltage before the product is used.

- In each time before turning on the power supply of the water basin of water.
- Switch on the power, the power indicator light, rotating heating switch, choose the food temperature, can make the space temperature rise, by natural convection, can keep the temperature of each layer.
- In the use process, such as the need for lighting, can open the lighting switch, can make the operation more convenient, better display effect, at the same time can open the top decorative lights, can increase the display effect.
- the use of finished, when cleaning, in order to prevent accidents: the power must be cut off.
- In the use of the process, such as abnormal phenomenon, should stop using, please troubleshooting, can continue to use.

4. Transportation and Storage:

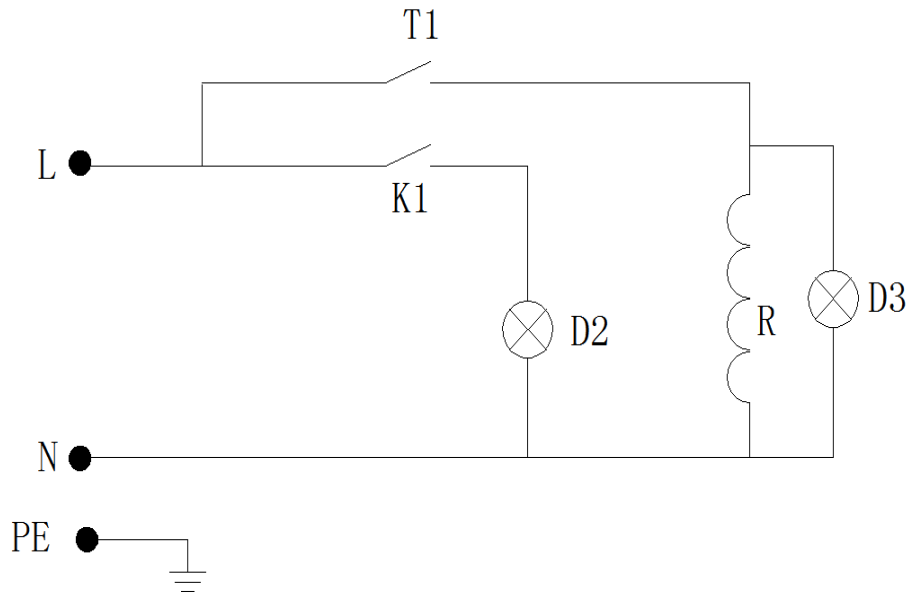
In the process of transportation, should prevent vibration, collision, inversion, extrusion, water and non corrosive gas should be stored in a warehouse.

5. Cleaning and Maintenance

Use is completed, with the use of non corrosive cleaning agent, wipe clean thermal insulation cabinet.

The paint has prohibited the use of dissolved liquid to wipe the surface thermal insulation cabinet.

6. Electrical Schematic



A symbolic description:

1、 K1 Lighting Switch

2、 D2 Lighting

3、 T1 Temperature control switch

4、 R Heating pipe element

5、 D3 Heat indicator lamp

TRUFROST AND BUTLER PRIVATE LIMITED

1215, 12th Floor, Tower B, Emaar Digital Greens, Golf Course Extn. Road, Sector 61, Gurugram – 122011 (India)

T. +91-7303166766 info@trufrost.com

www.trufrost.com