

TRUFROST & BUTLER

We understand cooling



T TRUFROST

b BUTLER®

Two brands - Trufrost and Butler team up to provide a comprehensive array of products for ice cream parlours, juice bars, patisseries, C-stores, modern food retail stores and more. Products that will make you breathe easy and see your business soar.

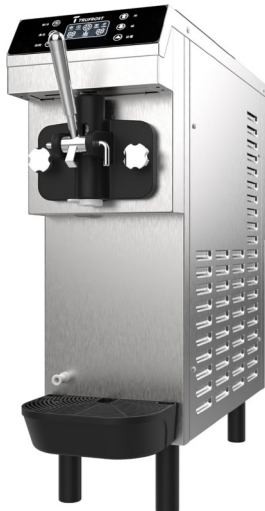


Generate additional revenue from small spaces



Soft Serve Freezers

The Trufrost floor-standing and countertop models feature a dual-flavour twin-twist option. Three models are available to suit various needs. Soft ice cream and frozen yoghurt are a breeze to prepare. Simply add the pre-mix from your chosen dairy or premix supplier, freeze it, and in a few minutes, you'll be ready to serve.



Solo



Tom & Jerry Plus



2 Plus 1



Technical Specifications



Model	Flavours	Max. production	Mix Hopper capacity	Freezing cylinder capacity (Litres)	W x D x H (mm)	First Dispensing	Consecutive Dispensing# (Cups*)	Power
Solo	1	10 Litres/Hr.	4 Litres x 1	1.5 x 1	220x660x660	13 minutes	4	700 W
Tom & Jerry Plus	Twin Twist	22 Litres/Hr.	4.3 Litres x 2	1.6 x 2	540x850x800	10 minutes	3 + 3	2200 W
2 Plus 1	Twin Twist	25 Litres/Hr.	5.5 Litres x 2	1.75 x 2	540x710x1440	9 minutes	5 + 5	2500 W

Data based on ambient temperature of 30°C - 32°C Electricals: 220V/50Hz/1 Phase
 Specifications are subject to change without prior notice due to continuous product development
 # Consecutive dispensing intervals assumed at 8 seconds based on practical experience
 * 80 gms of dispensing taken for each cup

Add **zing** to ice cream & yogurt

All you need to do is put out a few flavours of ice cream and a selection of toppings – be it chocolate or raspberry sauce or crunchy options like candy pieces, chopped nuts, crumbled cookies or baked chips . Your guests will love it.





Countertop Toppings Bar

This stunning toppings bar is suitable for refrigerated storage and display of ice cream and yogurt toppings. This countertop refrigerated display comes with an elegant curved glass lid on a stainless steel base which houses the refrigeration system. It has a digital temperature indicator and 8 x GN 1/6 pans.



DTR 8

Floor Standing Toppings Bar

S 900 is a floor standing refrigerated display that comes with a night cover. It comes with pan supports for 1 x GN 1/1 pan, 3 x GN 1/3 pans and 3 x GN 1/6 pans (not included). The refrigerated section in its underbelly is good for additional storage.



S 900

Technical Specifications



Model	No. of Layers No.	Description	Dimensions W*D*H (mm)	Volume (Litres)	Temperature Range (°C)	Refrigerant	Power (Watts)
DTR 8	1	8 x GN 1/6 pans	767*612*328	67	2~12	R 134a	110

Top glass also heated

Model	Cooling System	Product Dimensions W*D*H (mm)	Volume (Litres)	GN (530 x 325mm) compatibility	Product Weight (Kgs.)	No. of Doors / Drawers	No. of Shelves	Temperature Range (°C)	Refrigerant	Input Power (Watts)
S 900	Static	900*700*876	240	GN 1/1 Shelf per door	69	2	2	2~+10	R134a	180

Electricals: 220V/50Hz/1 Phase Specifications are subject to change without prior notice due to continuous product development

Please refer to information given next to the product picture.



Waffle Bakers

The waffle bakers from Butler come with a electro-mechanical timer and can accept deep-frozen, frozen pre-cooked waffles or freshly made batter for making golden crispy waffles.

- ◆ Quick and even heat spread
- ◆ Temperature control range: 124°C ~ 230°C
- ◆ Time Control Range: 99 Minutes & 50 Seconds ~00 Minutes & 00 Seconds



WB 1

Technical Specifications

Model	Power	Weight	Temperature Range	Dimensions (W x D x H in mm)	Time Control Range
WB 1	2kW	10kg	124°C ~ 230°C	250x450x300	50Sec ~ 99Mins

Voltage: 220-240V/50Hz

Specifications are subject to change without prior notice



Ice Cream Batch Freezers

Trufrost Batch Freezers provide you the convenience of making your own signature ice creams, gelato and sorbets from one easy-to-use machine. Bring Trufrost quality to the restaurant and catering world. Fruits, nuts and candies can be folded in as the product is being drawn into your container. Choose from two reliable models depending on your needs.



GBF 10



GBF 20

Technical Specifications



Model	W x D x H (mm)	Freezing Cylinder	Max Production	Refrigerant	Rated Input Power	Drive Motor	Weight
GBF 10	596 x 530 x 400	4.7 L	10L / hr	R 134a	800 W	1.375 HP	50 Kg
GBF 20	455 x 710 x 755	5.4 L	20L / hr	R 404a	2000 W	1.5 HP	100 Kg

Electricals: 220V/50Hz/1 Phase
continuous product development

Specifications are subject to change without prior notice due to



Blast Chillers / Shock Freezers For Ice Cream & Gelato

Once out of the batch freezer, at a temperature of -7/-8°C, not all water in ice cream is frozen. So you need to bring its temperature down to -14°C or further down to -18°C for storage in a freezer. Trufrost Shock freezers bring ice cream to -18°C in the shortest possible time. Free water turns into micro-crystals, which preserve the product, preventing changes to its quality, consistency and texture and also allows your ice cream to maintain its 'overrun'. Available in 3 capacities, they are suitable for both GN 1/1 and EN 400 x 600 mm tray sizes.

(Please ensure that the foodstuff to be blast chilled/frozen in these models is placed in open condition in the trays, and not in packages)



Technical Specifications



Model	Cooling System	Dimensions W*D*H (mm)	Pan Supports EN & GN 1/1		Chilling Capacity +70°C to +3°C	Freezing Capacity +70°C to -18°C	Refrigerant	Input Power (W)
			40mm deep	65mm deep				
BCF 5	Ventilated	800*800*990	5	3	20kgs in 90mins	15kgs in 240mins	R404a	760
BCF 10	Ventilated	800*800*1520	10	7	40kgs in 90mins	28kgs in 240mins	R404a	1500
BCF 13	Ventilated	800*800*1780	13	9	60kgs in 90mins	38kgs in 240mins	R404a	1860

Electricals: 220V/50Hz./Single Phase Pans not supplied with machine
 Specifications are subject to change without prior notice due to continuous product development

Juice Dispensers

These Trufrost dispensers are ideal for non-carbonated beverages, built with an energy efficient refrigeration system, they are easy & quick to dismantle and clean. They come with a shock proof, non-toxic polycarbonate bowls of 8 litres, 12 litres and 18 litres capacity with independent mixing control. These models come with a spray mechanism that creates a fountain effect and is suitable for syrup based, watery juice. These are however not recommended for pulp based drinks which are better dispensed in our model Turia-12 shown ahead.



JD 8.2



JD 16.2



Technical Specifications

Model	W x D x H (mm)	Power	Capacity	Feature	Type	Net Weight	Material	Certifications
JD 8.2	365 x 485 x 760	300W	8 x 2L	Cold Drink	Spray	24 Kg	Plastic/PC Tank	CE
JD 16.2	460 x 580 x 710	300W	16 x 2L	Cold Drink	Spray	25 Kg	Plastic/PC Tank	CE

Electricals: 220V/50Hz/1 Phase

Specifications are subject to change without prior notice





Multipurpose Dispensers

Versatile counter top models for the cooling and dispensing of a variety of popular Indian drinks such as Jal Jeera, Buttermilk, Lassi, Aam (mango) Panna & other natural juices with light pulp. The paddle is designed to stir the beverages and prevent any sedimentation and the machines are easy to clean and sanitize.



Turia 12 (JJ 12)



Chach/ Buttermilk



Jal Jeera



Sweet Lassi



Aam Panna

Technical Specifications

CE

Model	W x D x H (mm)	No. of bowls
Turia 12	270x410x724	12 litres

Electricals: 220V/50Hz/1 Phase

Specifications are subject to change without prior notice



Chocolate Melter

The Butler Chocolate Melters are designed to not only melt your chocolate, but keep it at the perfect temperature throughout your food service. It comes with a covered stainless steel bowl, which is removable for easy cleaning. These can be used to melt Pure and Compound Chocolate, Hot Sauces and Chocolate Dips and more. It comes with a Temperature Controller to control the heat. Although the low wattage is designed to ensure that the chocolate does not get burnt, constant manual stirring is a must for optimal results.



CMM 4

Technical Specifications

Model	Dimensions W x D x H (mm)	Tank Dimensions W x D x H (mm)	Temperature Range	Capacity	Power	Net Weight
CMM 4	203x355x292	176x 325x100	30~95°C	4 Litre	800W	5.0 Kg

Electricals: 220V/50Hz/1 Phase

Specifications are subject to change without prior notice due to continuous product development

The craft behind
captivating blends



Commercial Blenders with Acoustic Enclosure - Premia series

The TruBlend AQ Premia is a powerful commercial blender designed for cafés, bars, and juice outlets. It features a digital control panel for precise, consistent blending and an advanced acoustic enclosure that reduces noise by up to 80%. With a rugged 1.5L jar, metal connectors, and heavy-duty blades, it crushes ice effortlessly for smoothies, frappes, milkshakes, and more.



TruBlend AQ Premia

Commercial Blenders with Acoustic Enclosure

The TruBlend Crush offers dependable commercial performance with easy manual controls, including a variable speed dial and pulse function for hands-on precision. Built for busy outlets, it crushes ice quickly and blends smoothies, shakes, and cold beverages with ease, while its acoustic enclosure ensures quieter operation.



TruBlend Crush

Commercial Blenders

The Butler TruBlend is a reliable commercial blender ideal for cafés, juice bars, and busy food outlets. With simple manual controls, a variable speed dial, and pulse function, it offers precise blending control. Powerful blades crush ice in seconds, making it perfect for smoothies, shakes, frappes, juices, and cold coffee. The pulse feature also allows quick jar cleaning between uses.



TruBlend 1.8T

Technical Specifications



Model	Dimensions (WxDxH) mm	Power	Motor Power	Jar Capacity	Net Weight	Timer
TruBlend AQ Premia	240x280x540	1500 W	2.25HP	1.8 Litre	11 Kg	Yes
TruBlend Crush	240x267x502	1680 W	2.25HP	1.8 Litre	8.85 Kg	Yes
TruBlend 1.8T	240 x 280 x 515	1680 W	2.2 HP	1.8 Litre	Yes	6.5 Kg

Voltage: 220-240V/50Hz

Specifications are subject to change without prior notice

Single Spindle Drink Mixers

The Butler Drink Mixers offer great versatility for mixing drinks as well as food preparation. They are ideal for mixing ice cream shakes, 'lassi' or bar drinks and are equally handy for blending eggs or mixing batter for pancakes or waffles.



DM 1M



Technical Specifications

Model	Power	Voltage	Shaft Speed (r/min)	Dimensions (WxDxH)	Net Weight
DM 1M	150 W	220~240V/50Hz	12000 / 18000	180x160x550 mm	4.3 Kg

Specifications are subject to change without prior notice due to continuous product development

Inviting vertical displays with glass doors



Visi Coolers - Premia Series

(With top mounted compressors)

These Trufrost Premia Series plug-in type 2 glass door upright Coolers come with top mounted compressors. They provide an ultra rich and pleasing 'top to bottom' view of the displayed foodstuff – be it ice creams or any other packaged food. The cabinet interiors come with LED lights to enhance the quality of display.



VC 1250 Premia



VC 1800 Premia



VF 1250 Premia
VF 1800 Premia

Key Features

- ◆ Forced air circulation
- ◆ Adjustable shelves
- ◆ Interior LED lights
- ◆ Universal wheels, front with brake
- ◆ Double pane glass including Low E in Visi Coolers
- ◆ Self Closing doors
- ◆ Self evaporating drip tray
- ◆ Low-maintenance condenser
- ◆ Standard ambient for Visi Coolers +35°C at 65%RH

Technical Specifications



Model	Volume (L)	Door type	Shelves	Power	Dimensions (wxdxh) mm	Temperature range	Refrigerant	No. of Compressors
VC 1250 Premia	1250	2 Hinge	10	412W	1260x750x2092	+1°C ~ +10°C	R134a	1
VC 1800 Premia	1800	3 Hinge	15	675W	1880x750x2092	+1°C ~ +10°C	R134a	1
VF 1250 Premia	1250	2 Hinge	10	1472W	1260x750x2092	-18°C ~ -22°C	R404a	2
VF 1800 Premia	1800	3 Hinge	15	1850W	1880x750x2092	-18°C ~ -22°C	R404a	2

Electricals: 220V/50Hz./Single Phase

Specifications are subject to change without prior notice due to continuous product development

Working condition for open chillers/glass door freezer is class 3 (Room Temp. 25°C and 60%RH)

Traditional Visi Freezer

Trufrost upright visi freezers are known for their reliability and provide a pleasing view of the displayed foodstuff – be it ice creams or any other packaged frozen food. The VF-400 and VF-1000 are among our fast selling models. They have a ventilated cooling system with automatic defrost and are fitted with LED lights to enhance the quality of display.



VF 400 (New)



Technical Specifications - Visi Freezers



Specification	Gross Volume (Litres)	Dimensions w x d x h (mm)	Temperature Range	Power (w)	Lock	Defrost	No. of Lids / Doors	No. of shelves	Interior Light	Wheels / Castors	No. of Compressors	Refrigerant
VF 400 (New)	90	600x530x845	≤-22°C	230	Yes	Automatic	1	3	Yes / 2LEDs	Yes	1	R290a

Electricals: 220V/50Hz/1 Phase Specifications are subject to change without prior notice due to continuous product development
 Working condition for open chillers/glass door freezer is class 3 (Room Temp. 25°C and 60%RH)

Visi Coolers - Italia Series

The Italia series from Trufrost represents a truly premium range of visi coolers in an elegant black body and a luxe frameless door design. These chic visi coolers are designed to enhance the ambience of any store and help you increase your sales by showing beverage bottles, cans, juice packs and other foodstuff at their very best.

- ◆ A choice of 3 models in 77, 300 and 400 litre capacities
- ◆ LED lighting to enhance the display quality
- ◆ VC 300 Slim Italia comes with a very attractive slim fascia
- ◆ VC 300 Slim Italia & VC 400 Italia models also come with black interiors and black shelves



VC 77 Italia



VC 300 Slim Italia



VC 400 Italia

Visi Coolers - NEU Series

The NEU series from Trufrost is yet another premium range of visi coolers draped in a cool white body and an attractive aluminium alloy door frame. The NEU series visi coolers are designed to provide a pleasing look to any store and help you increase your sales by showing beverage bottles, cans, juice packs and other foodstuff at their very best.

- ◆ A choice of 4 models from 250 – 650 litre capacities
- ◆ LED lighting to enhance the display
- ◆ Attractive aluminium alloy door frame

Visi Coolers - Black Head Series

The Black Head series from Trufrost represents a truly premium range of visi coolers with an elegant black head and a luxurious design. The elimination of the top canopy intelligently creates more space for your display. These stylish visi coolers are crafted to enhance the ambience of any store and help you boost your sales by displaying beverage bottles, cans, juice packs, and other food items at their very best.



VC 250 NEU

VC 350 NEU

VC 450 NEU

VC 650 NEU

VC 250 Black Head

VC 350 Black Head

VC 450 Black Head

Technical Specifications - Visi Coolers



Specification	Gross Volume (Litres)	w x d x h (mm)	Temperature Range	Power (w)	Lock	Defrost	No. of Lids / Doors	No. of shelves	Interior Light	Wheels / Castors	No. of Compressors	Refrigerant
VC 77 Italia	70	495x450x670	1 - 9°C	85	Yes	Automatic	1	2	LED light	No	1	R600a
VC 300 Slim Italia	300	420x525x1920	2 - 8°C	170	No	Automatic	1	5	LED light	4 legs	1	R600a
VC 400 Italia	400	575x565x1920	2 - 8°C	220	Yes	Automatic	1	5	LED light	4 legs	1	R600a
VC 250 NEU	250	575x555x1645	0 - 10°C	180	Yes	Automatic	1	4	LED light	4	1	R600a
VC 350 NEU	350	575x610x1710	0 - 10°C	210	Yes	Automatic	1	4	LED light	4	1	R600a
VC 450 NEU	450	615x610x1990	0 - 10°C	240	yes	Manual	1	5	LED light	4	1	R600a
VC 650 NEU	650	655x705x1990	0 - 10°C	280	Yes	Manual	1	5	LED light	4	1	R290
VC 250 Black Head	250	540x560x1510	0 - 10°C	200		No frost	1	3	LED light	2 castors & 2 feet	1	R290
VC 350 Black Head	280	540x570x1710	0 - 10°C	240		No frost	1	4	LED light	2 castors & 2 feet	1	R290
VC 450 Black Head	380	595x607x1860	0 - 10°C	300		No frost	1	5	LED light	2 castors & 2 feet	1	R290

Electricals: 220V/50Hz/1 Phase Specifications are subject to change without prior notice due to continuous product development
 Working condition for open chillers/glass door freezer is class 3 (Room Temp. 25°C and 60%RH)





Visi Coolers

Trufrost brings to India a contemporary range of merchandising solutions that help you increase your sales by showing beverage bottles, cans, juice packs and other foodstuff at their very best. These innovative cooling displays are available in 50 to 1500 litre capacities and 1 Door/ 2 Door variants. They are designed to keep products at the optimum temperature and display them in a way that causes them to jump off the shelves into shopping baskets.



VC 50



VC 100 (New)



VC 700 NF
VC 1000 NF

Technical Specifications - Visi Coolers

Specification	Gross Volume (Litres)	w x d x h (inches)	Temperature Range	Power (w)	Lock	Defrost	No. of Lids / Doors	No. of shelves	Interior Light	Wheels / Castors	No. of Compressors	Refrigerant
VC 50	50	18 x 20 x 20	2 - 8°C	65	No	Yes	1	2	LED light	No	1	R134a
VC 100 (New)	100	18 x 20 x 33	2 - 8°C	65	No	Yes	1	4	LED light	No	1	R134a
VC 700 NF	680	35 x 24 x 78	2 - 8°C	349	Yes	Automatic	2	8	Yes / 2LEDs	Yes	1	R134a
VC 1000 NF	1000	44 x 27 x 82	2 - 8°C	475	Yes	Automatic	2	8	Yes / 2LEDs	Yes	1	R134a

Electricals: 220V/50Hz/1 Phase Specifications are subject to change without prior notice due to continuous product development
Working condition for open chillers/glass door freezer is class 3 (Room Temp. 25°C and 60%RH)

Crystal Tower Premia

Designed to create a stunning 360° display for cakes, beverages and gourmet treats that instantly elevates your store appeal. Featuring panoramic glass with LED lighting, ventilated refrigeration, auto defrost and a premium black titanium finish for uniform cooling and visual impact.



Frozen Tower (Panoramic Ventilated Freezer Showcase)

Crafted to showcase gelato and frozen desserts with maximum visibility and uncompromising elegance. Equipped with panoramic heated glass, ventilated refrigeration and adjustable shelves for crystal-clear display and consistent freezing performance.



Technical Specifications - Confectionery Showcases



Model	Product	No. of Layers		Dimensions W*D*H (mm)	Volume (Litres)	Temperature Range (°C)	Front Glass	Refrigerant	Power (Watts)
		No.	Description						
Crystal Tower Premia	4 Side Glass Panoramic Cake Showcase	5	Base + 4 shelves	675*695*1800	660	2~8	Double Glass	R 290a	590
Frozen Tower	4 Side Glass 5 Layers Panoramic Ventilated Freezer Showcase	5	Base + 4 shelves	650*650*1950	319	-18 ~ -22	Double Glass	R 290a	1000

Electricals: 220V/50Hz./Single Phase

Specifications are subject to change without prior notice due to continuous product development

Top glass also heated

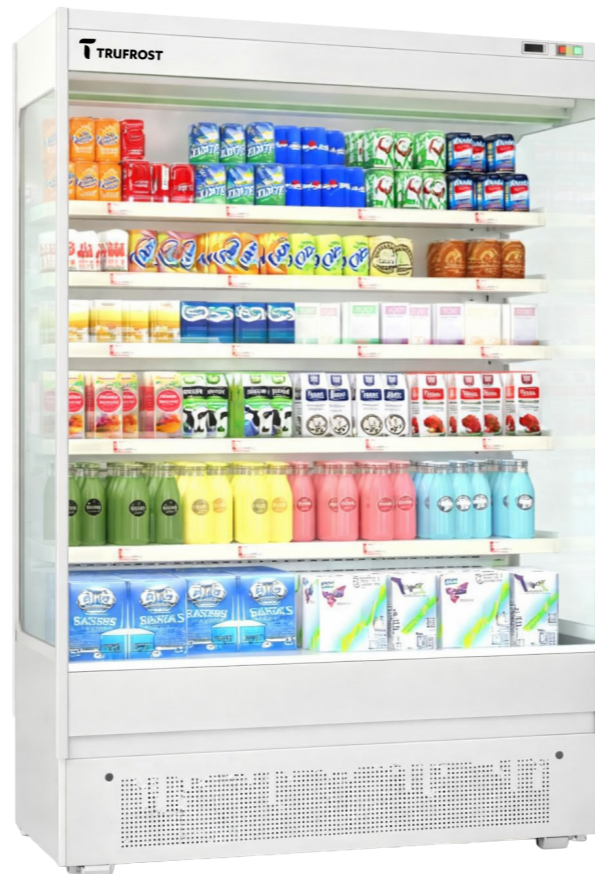


Plug-in Multideck Chillers

Designed for modern retail, Trufrost vertical open plug-in multidecks combine high visibility with effortless flexibility. Ideal for a wide range of fresh and packaged products, these cabinets feature an integrated plug-and-play design for easy placement and relocation.

Key Features

- ◆ High efficiency and balanced refrigeration system
- ◆ Optimised shelf depth enables more effective displayable volume
- ◆ Night curtain minimizes energy loss
- ◆ Off-cycle defrost reduces the energy consumption



PMD 1270



PMD 1880

Technical Specifications - Plug-in Multidecks Stainless Steel



Product	Model	Dimensions wxdxh (in mm)	Capacity (in Litres)	Temperature (in °C)	Power	Rated Current	Energy consumption kW per day	Refrigerant	Shelves
Plug In Multideck Chiller	PMD 1270	1270x760x2000	565L	+2 ~ +8	1500 W	10.5A	38.8	R290a	5
Plug In Multideck Chiller	PMD 1880	1880x760x2000	822L	+2 ~ +8	2250 W	1.6A	32.8	R404	5

Electricals: 220V/50Hz./Single Phase Specifications are subject to change without prior notice due to continuous product development
 Working condition for open chillers/glass door freezer is class 3 (Room Temp. 25°C and 60%RH)



T TRUFROST

Chest Freezers



Trufrost Hard Top Chest Freezers

The 2-in-1 hard-top chest freezers from Trufrost conveniently double as chillers with the turn of a knob and are available in a wide range of sizes from 175 to 628 litres to suit every conceivable need. You can also choose between single-, double- and three-lid variants. They come with contemporary R290 refrigerant and extra-thick 70mm PUF insulation, enabling optimal performance even in tropical summers.



CF 175 Premia, CF 225 Premia



CF 330 DD Premia, CF 440 DD Premia
CF 550 DD Premia



CF 700 TD Premia

Trufrost Glass Top Chest Freezers

Trufrost Flat Glass Top Freezers add a new dimension to the routine glass-top freezers available on the market. They are designed to enhance product display. They come with well-designed baskets for easy access and convenient segregation of displayed items, and with extra-thick 70mm insulation and exteriors built into a pleasing white body. Currently, you can choose between three different sizes and capacities.



GT 300 Premia



GT 400 Premia



GT 500 Premia

Dual Temperature Freezers / Chillers

Trufrost dual-temp freezers/chillers have two segregated storage compartments – ideal for storing ice creams and frozen foods in one and dairy products or beverages in the other.



DT 400 Premia



Technical Specifications



Specification	Hard Top Freezers					Glass Top Freezers				Dual Temp Freezers
	CF 175 Premia	CF 225 Premia	CF 330 DD Premia	CF 440 DD Premia	CF 550 DD Premia	CF 700 TD Premia	GT 300 Premia	GT 400 Premia	GT 500 Premia	DT 400 Premia
Gross Capacity (Litres)	175	220	320	424	529	628	350	450	550	
Net Capacity (Litres)	134	208	305	405	505	605	268	356	445	172L-Freezer, 208L-Cooler
Star Rating (proposed)	-	3 STAR	5 STAR	3 STAR	4 STAR	4 STAR	-	-	-	-
Gross Dimensions WxDxH (mm)	700 X 730 X 920	940 X 730 X 920	1220 X 730 X 920	1520 X 730 X 920	1820 X 730 X 920	2100 X 730 X 920	1220 X 730 X 920	1520 X 730 X 920	1820 X 730 X 920	1520 X 730 X 920
Net Dimensions WxDxH (mm)	640 X 679 X 889	875 X 679 X 889	1164 X 679 X 889	1464 X 679 X 889	1764 X 679 X 889	2045 X 679 X 889	1164 X 644 X 889	1464 X 644 X 889	1764 X 644 X 889	1464 X 679 X 889
Compressor Make	GMCC	GMCC	GMCC	GMCC	GMCC	GMCC	GMCC	GMCC	GMCC	GMCC
Temperature Range	+6 °C to -24 °C	+6 °C to -24 °C	+6 °C to -24 °C	+6 °C to -24 °C	+6 °C to -24 °C	+6 °C to -24 °C	-11 °C to -26 °C	-11 °C to -26 °C	-11 °C to -26 °C	+6 °C to -24 °C
Electricals	230V/50HZ/1PH	230V/50HZ/1PH	230V/50HZ/1PH	230V/50HZ/1PH	230V/50HZ/1PH	230V/50HZ/1PH	230V/50HZ/1PH	230V/50HZ/1PH	230V/50HZ/1PH	230V/50HZ/1PH
Refrigerant	R290	R290	R290	R290	R290	R290	R290	R290	R290	R290
Number of Lids	1	1	2	2	2	2	2	2	2	2
Cabinet PUF Thickness (mm)	70	70	70	70	70	70	70	70	70	70
Lid Puff Thick, mm	70	70	70	70	70	70	4	4	4	70
Wheels	Yes	Yes	Yes	Yes	Yes	Yes	Yes	Yes	Yes	Yes
Baskets	1	1	2	2	2	2	2	3	4	1

Electricals: 220V/50Hz/1 Phase

Specifications are subject to change without prior notice due to continuous product development



Gelato Scooping Displays

The Wow Gelato 12 Premia comes with 12 GN 1/4 pans and is a stunning display for ice cream and gelato. You can showcase additional ice cream or gelato flavours by using GN 1/4 pans (not included with the machine).



Wow Gelato 12 Premia



Technical Specifications



Model	Dimensions W*D*H (mm)	Capacity (L)	Temperature Range (°C)	Pan	Power Supply	Cooling Mode
Wow Gelato 12 Premia	1283*900*1250	-	-16 ~ -18	12 Pcs	230V/50Hz	Ventilated

Electricals: 220V/50Hz./Single Phase

Specifications are subject to change without prior notice due to continuous product development

Ice Cream Batch Freezers

Trufrost Batch Freezers provide you the convenience of making your own signature ice creams, gelato and sorbets from one easy-to-use machine. Bring Trufrost quality to the restaurant and catering world. Fruits, nuts and candies can be folded in as the product is being drawn into your container. Choose from two reliable models depending on your needs.



GBF 10



GBF 20



GBF 40



Technical Specifications



Model	W x D x H (mm)	Freezing Cylinder	Max Production	Refrigerant	Rated Input Power	One Batch Production	Weight
GBF 10	590 x 530 x 400	5.1 L	8L / H	R 134a	800 W	2.5L	50 Kg
GBF 20	455 x 710 x 755	5.6 L	15L /H	R 404a	2000 W	3L	100 Kg
GBF 40	520X710X1180	8 L	30L /H	R 404a	3200 W	5L	120 Kg

Electricals: 220V/50Hz/1 Phase

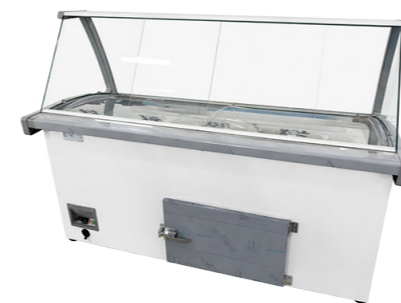
Specifications are subject to change without prior notice due to continuous product development

Trufrost Scooping Parlour Freezers

The Trufrost Scooping Parlour Freezer adds a new dimension to the routine glass-top freezers available on the market. It comes with a contemporary sneeze guard and a service platform at the rear. It is equipped with 12 stainless-steel pans for ice cream or gelato, and it also has an additional storage section that can be operated from the back. It features LED lighting for the inner cabinet and the front glass to enhance your display, and it comes with extra-thick 70mm insulation. Currently available in one size.



SPC 12



Storage space



Technical Specifications

Product	Model	Dimensions wxdxh (in mm)	Temperature range	Power	Climate Class	Rated Current	Pans	Effective Volume
Scooping Parlour Freezer	SPC 12	1665x695x850	-18°C ~-25°C	370 W	7/ST	2.0A	12	480L

Electricals: 220V/50Hz./Single Phase Specifications are subject to change without prior notice due to continuous product development
 Working condition for open chillers/glass door freezer is class 3 (Room Temp. 25°C and 60%RH)

Ice Machines

Highly relevant for commercial outlets where space is at a premium, the self contained Trufrost Ice Machines present the best options for coffee shops and restaurants and can also be used for undercounter applications.

- ◆ Contemporary, elegant design available in ice production capacities ranging from 18 to 910 kg per day
- ◆ Insulated ice storage bin and door minimize air condensation and water formation
- ◆ IC 18BW also comes with a cold water dispensing option
- ◆ IC 35BWA & IC 50BWA models have the option of accommodating a bottled water jar on top
- ◆ IC-25 Premia, IC35BWA, IC-50BWA & IC-100 models are also suitable for undercounter applications so long the recommended circulation space can be provided for the discharged hot air from the machine.
- ◆ IC-25 Premia can also be placed over the counter.



Technical Specifications



Model	Capacity / 24 hrs.*	Ice Storage Capacity	Cube Shape / Size (mm)	Refrigerant	Electricals	Power (w)	Dimensions wxdxh (mm)	Compatible Storage Bin
IC 25 Premia	25 kgs.	6.0 kgs.	Dice / 28*28*23	R404a	220V/50Hz	180	380*470*600	-
IC 35 BW Premia	30 kgs.	15 kgs.	Dice / 28*28*23	R404a	220V/50Hz	280	500*450*830	-
IC 55 BW Premia	50 kgs.	18 kgs.	Dice / 28*28*23	R404a	220V/50Hz	320	500*590*830	-
IC 55 BW Premia XL	50 kgs.	18 kgs.	Dice / 35*35*23	R404a	220V/50Hz	320	500*590*830	-
IC 100 Premia	98 kgs.	45 kgs.	Dice / 28*28*23	R404a	220V/50Hz	600	660*680*930	-
IC 220 Premia	220 kgs	150 kgs.	Dice / 28*28*23	R404a	220V/50Hz	850	560*830*1600	ISB-150
IC 350 Premia	350 kgs.	220 kgs.	Dice / 28*28*23	R404a	220V/50Hz	1200	760*830*1600	ISB-220
IC 460 Premia	460 kgs.	220 kgs.	Dice / 28*28*23	R404a	220V/50Hz	1600	760*830*1800	ISB-220
IC 1000 Premia	950 kgs.	460 kgs.	Dice / 28*28*23	R404a	380V/50Hz	4500	1220*930*1980	ISB-460

* At 10°C incoming water and 10°C air temperature Height & width for IC 220/350/460/1000 is with the suggested storage bin
 Specifications are subject to change without prior notice due to continuous product development





Scan the QR codes given below to download other catalogues for

- | | | |
|----------|---------------------------------------|--|
| 1 | Bakeries
Confectionery | ↓
 |
| 2 | Commercial Kitchens
Cloud Kitchens |  |
| 3 | Cafés
Patisseries |  |
| 4 | Pizzerias
QSRs |  |
| 5 | Ice Cream Parlours
Juice Bars |  |
| 6 | Resto-bars
Pubs |  |
| 7 | Food Retail
Supermarkets |  |
| 8 | Food Preservation
Cold Storage |  |

TRUFROST & BUTLER

Trufrost & Butler Pvt. Ltd.

Formerly, Trufrost Cooling Pvt. Ltd.

1215, 12th Floor, Tower B, Emaar Digital Greens,

Golf Course Extn. Road, Sector 61, Gurugram - 122011, India

Tel: +91-124-4246560 Email: info@trufrost.com www.trufrost.com

Andhra/Telangana : 7042027666
 Chennai : 7303890587, 9289143691
 Chhattisgarh : 7303890590
 Coldroom (North): 8448445701, 7303196612
 Coldroom (South): 9319399771, 7303890585
 Delhi/NCR : 8448759200, 7303890582
 Goa : 7303196614

Gujarat : 9319579748
 Assam/North-East : 9319391542, 9667795491
 J & K / Himachal : 9717664894
 Karnataka : 7303890588, 9289143696
 Kerala : 9717664984, 7303890587
 Maharashtra : 7303890586
 Mumbai : 7303196614, 9319579748

Orissa : 7303890590, 9667795491
 Punjab / Haryana : 8448319200, 9319399772
 Rajasthan : 8448759200
 UP : 7303196607
 MP : 7303890582
 Uttarakhand : 8448319200, 9319399772
 West-Bengal/Bihar : 7303890590, 9667795491

Reach-in Cabinets • Undercounter Refrigeration • Blast Freezers • Ice Cubers • Flake Ice Machines • Wine Coolers • Wine Walls • Back Bars • Bottle Coolers • Draught Beer Systems
 Soft Serve Freezers • Granita Dispensers • Juice Dispensers • Hot Chocolate Dispensers • Confectionery Display Cases • Chest Freezers & Coolers • Minibars • Multideck Chillers
 Deli Counters • Visi Coolers • Visi Freezers • Walk-in Coldrooms • Cold Storages • Pre-Coolers • Ultra Low Freezers • Pharmacy Freezers & Coolers • Blood Bank Refrigeration • Mobile Coolers
 Air Sanitisers • Crockery & Cutlery Sterilisers • UV Warm Wipe Sterilisers • Ozone Fruits & Vegetables Disinfectors • Foot Press Water Dispensers



Discover more at
www.trufrost.com