



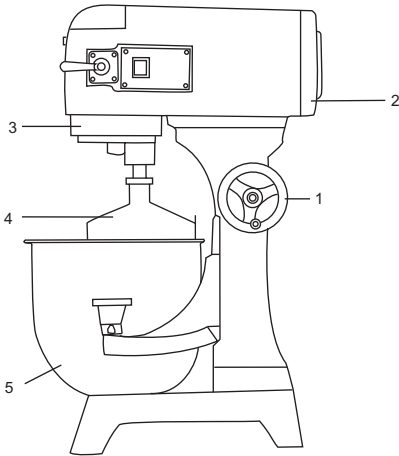
# **USER MANUAL**

**Planetary Mixers: PM-10**

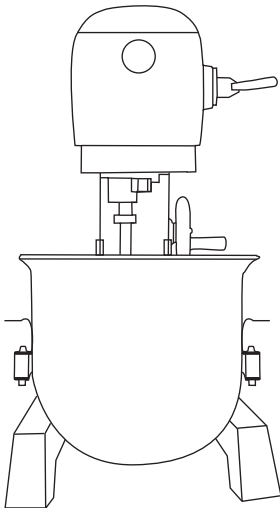
CE



## PARTS CATALOG OVERVIEW



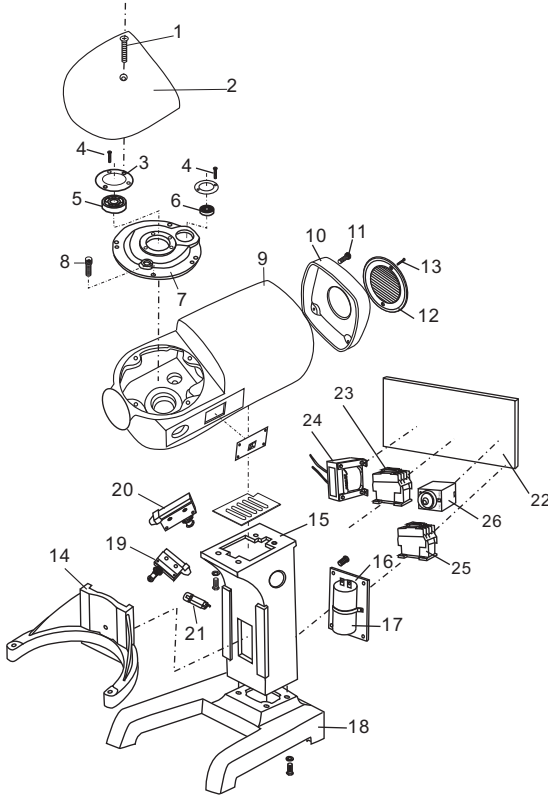
Item	Description
1	french
2	rear cover
3	ring
4	Mixing device III
5	bowl



### NOTES:

- The no using pipe line sprays to wash the mixer.
- Wet hand in no using contact switch with power supply plug.
- While maintaining the mixer, must pull out first the power supply plug, and from profession the personnel maintains.

Figure 1 TRANSMISSION CASE, ARM, STAND



Item	Description	Qty
1	screw M5*35	1
2	cover	1
3	plate	1
4	screw M5*12	5
5	bearing 6202	1
6	bearing 6201	1
7	bearing cover	1
8	screw M5*20	4
9	body	1
10	rear cover	1
11	screw M6*55	4
12	breeze window	1
13	screw M5*12	1
14	arm	1
15	stand	1
16	capacitor board	1
17	capacitor	1
18	seat	1
19	safety covering switch	1
20	fluctuate safety switch	1
21	overload protection switch	1
22	board	1
23	AC contact device	1
24	reactor	1
25	AC contact device	1
26	timer relay	1

NOTES:

► Machine at a factory hour have added to note the superior quality lubricates the grease, usually the circumstance bottom can use for several years, but machine is after maintaining, must replace the lubrication grease.

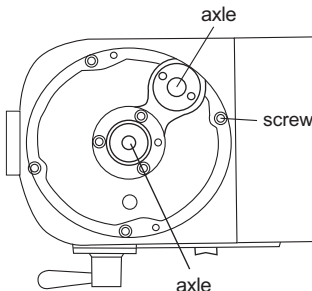
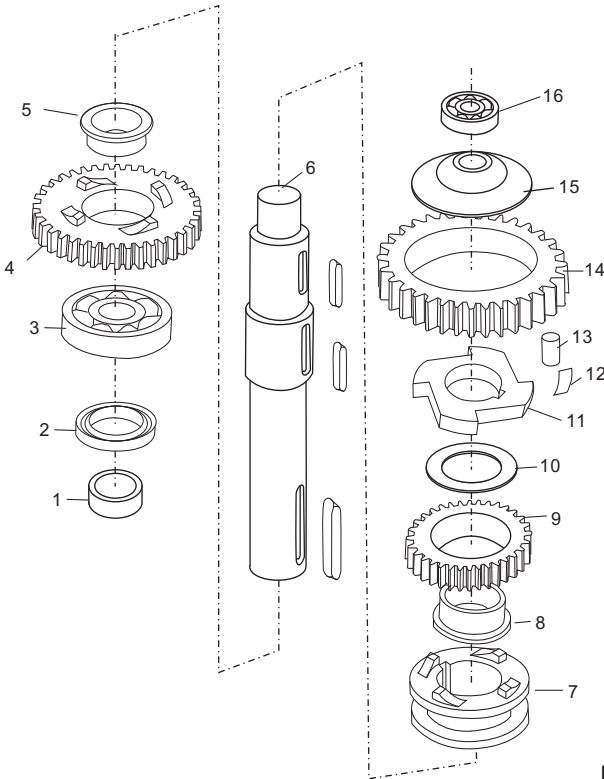


Figure 2 AXLE



Item	Description	Qty
1	cover	1
2	oil seal 25*40*10	1
3	bearing 6204	1
4	big joint gear	1
5	bearing ring	1
6	axle	1
7	joint	1
8	bearing ring	1
9	joint gear	1
10	dividing ring	1
11	engager	1
12	spring	8
13	roller	4
14	gear ring	1
15	plate ring	1
16	bearing 6001	1

NOTES:

- Be sure to install correct position (see Figure 2-1) and lubricate all of the pins in the sleeve drive when reassembling.
- Joint (7) must always be raised and lowered smoothly. Be sure joint sleeve as shown in Figure 2-2.
- Check oil seal, if serious oil leaks from drip cup.

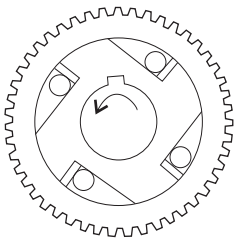


FIGURE 2-1

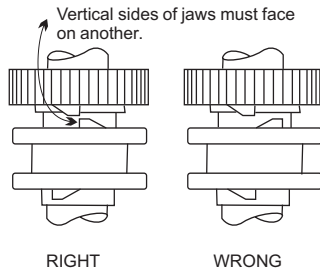
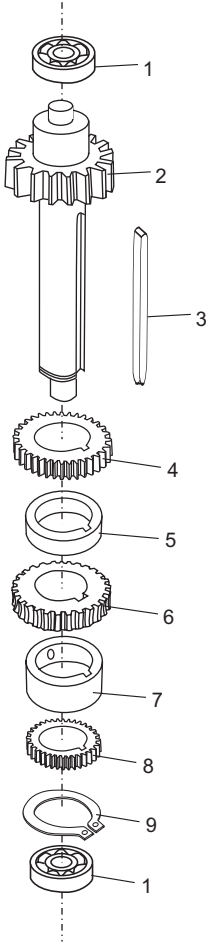


FIGURE 2-2

Figure 3 GEAR AXLE

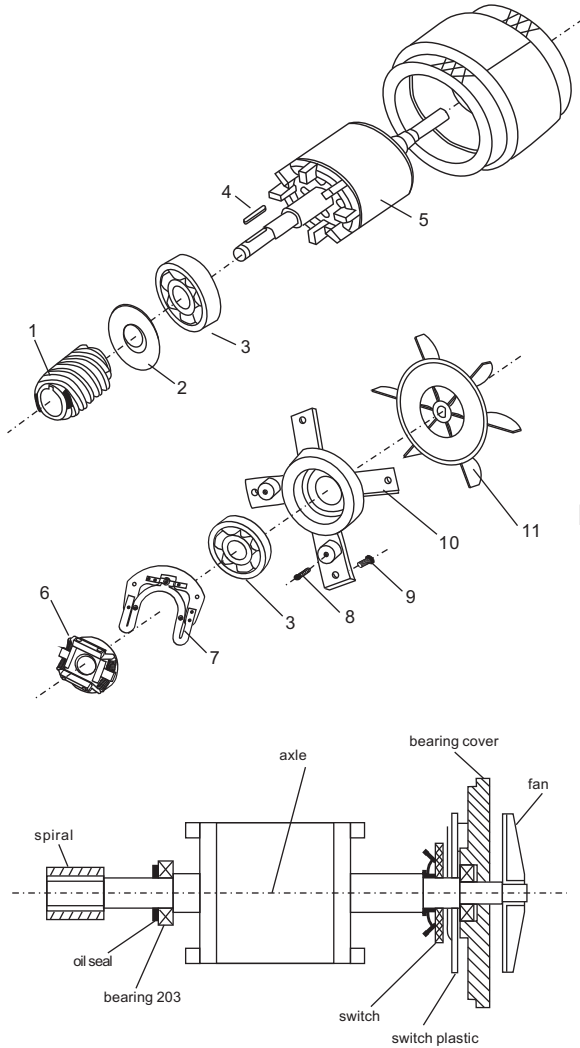


Item	Description	Qty
1	bearing 6001	2
2	gear axle	1
3	key 5*58	1
4	gear	1
5	collar	1
6	gear	1
7	long collar	1
8	gear	1
9	stop ring	1

NOTES:

- Be sure that the keys are inserted for each gear.

Figure 4 MOTOR UNIT



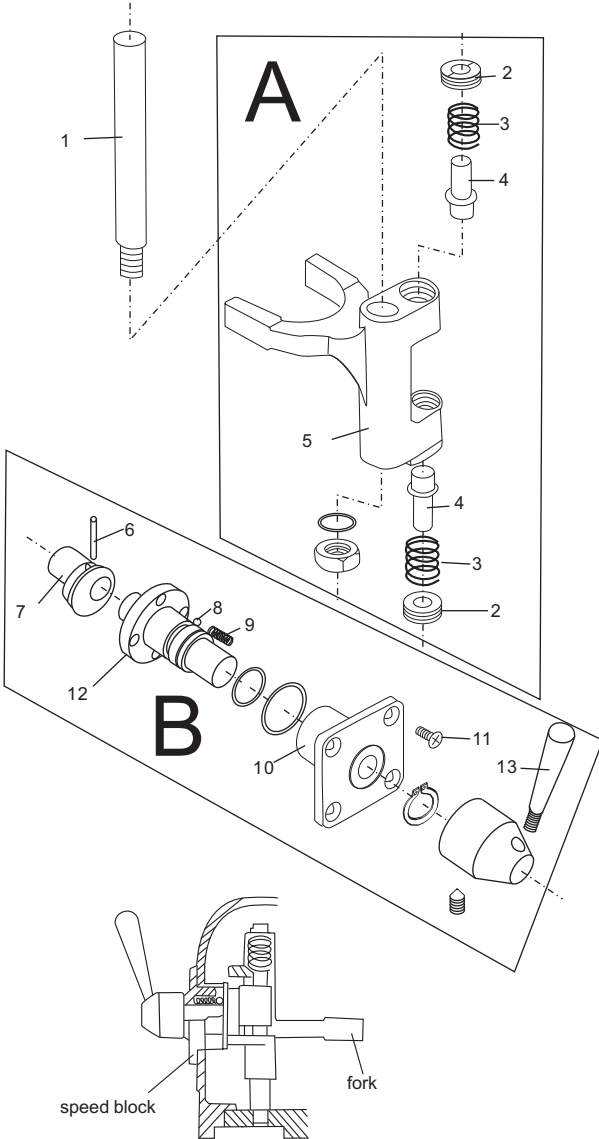
Item	Description	Qty
1	spiral	1
2	oil seal	1
3	bearing 203	2
4	key 4*22	1
5	axle	1
6	switch	1
7	switch plastic	1
8	screw M4*8	2
9	screw M6*16	4
10	bearing cover	1
11	fan	1

**NOTES:**

- If the motor does not work, first verify the power source and connection. Next, check for damaged or faulty wiring or connections inside the mixer. A nonworking motor may be the result of inappropriate voltage, broken wires, a defective capacitor, or a defective centrifugal governor. Motor damage may also be caused by bowl overload during mixing.
- Motor set includes motor axle, rotor and stator.
- Figure 4-1 is component system diagrams of motor.

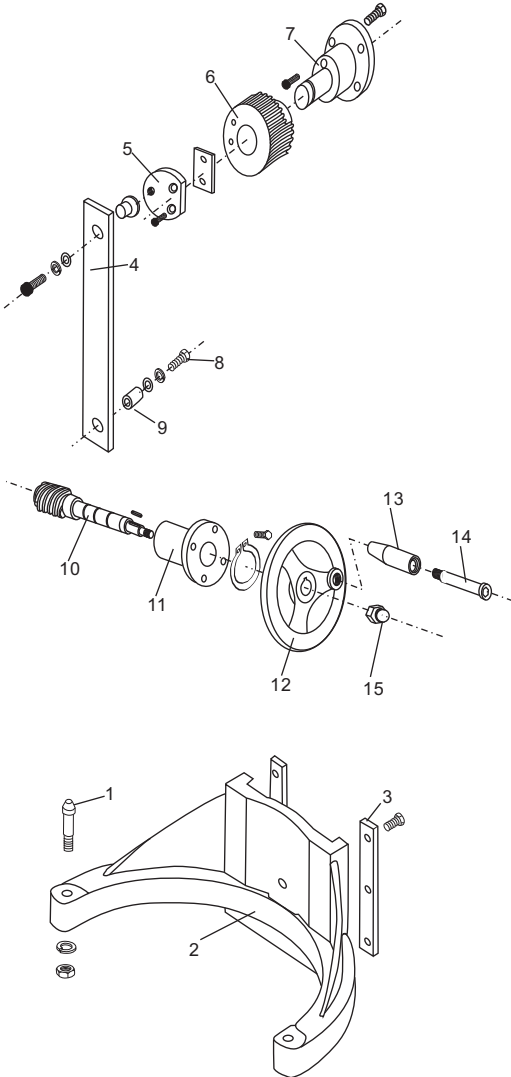
Figure 4-1

Figure 5 FORK AND SPEED SHAFT



Item	Description	Qty	
1	axle	1	
A	2	nut	1
	3	spring	1
	4	shaft	1
	5	fork	1
B	6	pin 3*20	1
	7	eccentricity knot	1
	8	steel ball	3
	9	speed spring	3
	10	speed block	1
	11	screw M5*10	1
	12	shaft	1
	13	handle	1

Figure 6 ARM AND BOWL LIFTER UNIT



Item	Description	Qty
1	screw	2
2	arm	1
3	plate	2
4	pull pole	1
5	plate	1
6	gear	1
7	brace seat	1
8	screw M8*20	1
9	sleeve	1
10	spiral	1
11	french support	1
12	french	1
13	handle	1
14	handle screw	1
15	nut	1

Figure 7 HANDGRIP TYPE BOWL LIFTER UNIT

Item	Description	Qty
1	lifting bar	1
2	cottor pin 3*30	1
3	nut M10	3
4	flat washer	2
5	compression spring	1
6	little knot	1
7	lifting handle bracket	1
8	flat washer	1
9	flange knot	1
10	screw M6*25	1
11	key 5*20	1
12	bowl lift handle	1

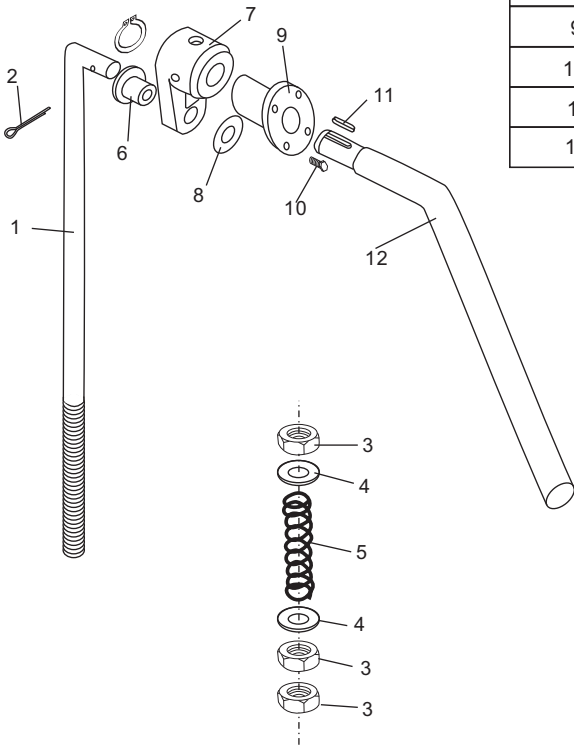
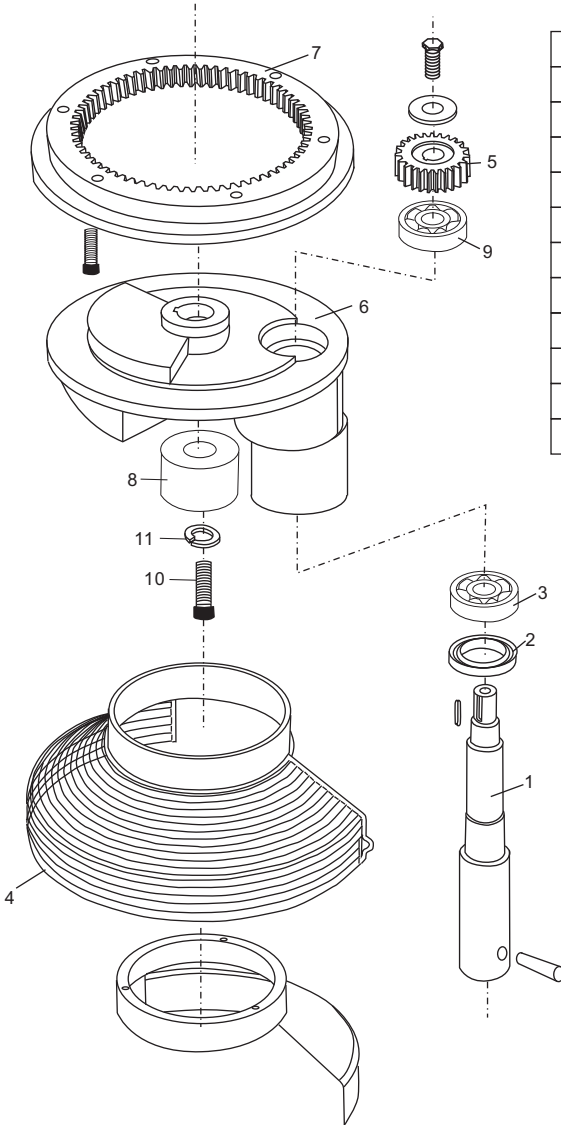
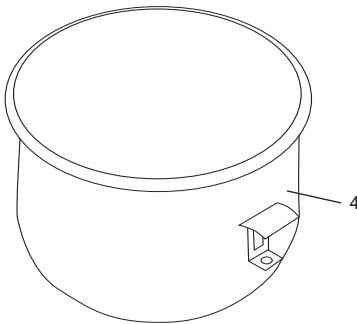
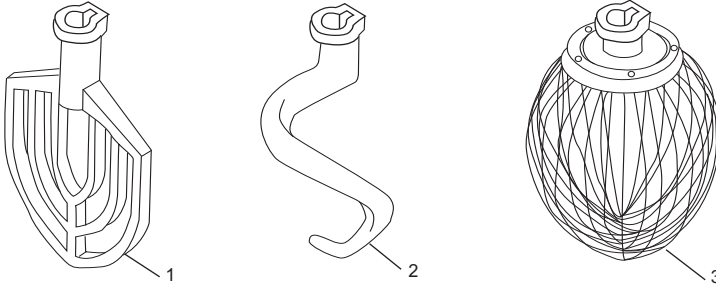


Figure 8 TURNING PLATE AND MIXING AXLE



Item	Description	Qty
1	mixing axle	1
2	Oil seal 20*40*10	1
3	bearing 6003	1
4	safety net	1
5	planetary gear	1
6	turning plate	1
7	inner gear	1
8	cover	1
9	bearing 6203	1
10	screw M8*20	1
11	ring	1

Figure 9 STANDARD ACCESSORIES


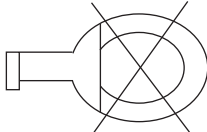
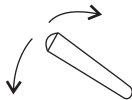

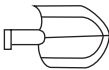



Item	Description	Qty
1	Mixing device I	1
2	Mixing device II	1
3	Mixing device III	1
4	bowl	1

**NOTES:**

- Any agitator is easily installed by simply raising it onto the mixing axle, and then rotating it counter-clockwise on the shaft until into place. To remove, raise the agitator on the shaft until it clears the lock and then rotate clockwise and lower.

## OPERATION INSTRUCTION

 <p>220V 230V</p>	<p>➤ Before using, please check power supply if it match your machine and be sure ground wire is eliable.</p>	
	<p>➤ Before testing, please take mixing device off first, in order to avoid damage machine which is match moving direction. It's necessary to change the three-phase machine if the moving direction is not match with arrow.</p>	
<p><b>OFF</b></p>	<p>➤ For changing the speed: Please stop machine first before change speed in order to avoid damage gear box.</p>	
	<p>➤ Mixing: according to the different mixing-material. Choose the different mixing devices and speed.</p>	
<p>A</p>		<p>➤ A: Be suitable for mix and stir butter, eggs, and work with in high speed, working time is less than 15 minutes.</p>
<p>B</p>		<p>➤ B: Be suitable for mix and stir stuffing and raw material, and work in middle speed, working time is less than 20 minutes.</p>
<p>C</p>		<p>➤ C: middle position is suitable for mixing dough, working time is less than 30 minutes. Flour water quantity is 40%-50%.</p>

## WARNING AND SPECIAL ATTENTION

### WARNING

- 1 DON'T USE WATER PIPE TO WASH THE MIXER DIRECTLY;
- 2 PLEASE PULL OFF THE PLUG BEFORE MAINTAINNING, AND MAKE IT MAINTAINED BY PROFESSIONALS;
- 3 DON'T TOUCH THE SWITCHS AND PLUG WITH WET HAND;
- 4 IF BROKEN, PLEASE STOP USING AT ONCE
- 5 THERE IS A GROUNDED NUT (SIGNED "  $\frac{1}{2}$  ") IN THE MACHINE, PLEASE RECOVER IT TO ORIGIN CONDITION, DON'T CANCEL THE GROUNDED LINE;
- 6 DON'T PUT HANDS INTO THE BOWL OR TOUCH THE MIXING DEVICES WHEN WORKING;
- 7 DON'T ALLOW THE MINOR CLOSE TO THE MACHINE;
- 8 THE MACHINE SHOULD BE FIXED ON THE DRY WOODEN SPLINT AND WORK IN SAFE AREA;
- 9 IF THE ELECTRICAL WIRE IS BROKEN, PLEASE CHANGE IT BY PROFECTIONALS.

### SPECIAL ATTENTION

- 1 BEFORE USING , PLEASE CLEAN THE BOWL AND THE MIXING DEVICES CAREFULLY, AND THEN INSTALL THE BOWL ONTO THE MACHINE CORRECTLY AND TIGHTLY;
- 2 WHEN CHOOSING MIXING DEVICES, PLEASE REFER TO THE OPERATION MANUAL TO CHOSE THE CORRECT SPEED, OR IT WILL DESTORY THE INSIDE SPARE PARTS AND SHORTEN THE USING LIFE OF THE MACHIE;
- 3 AFTER USING, PLEASE POWER OFF THE MACHINE, AND PUT THE BOWL AND DEVICES IN THE SAFE AND CLEAN PLACE AFTER CLEANING;
- 4 KEEP ENVIROMENT ARROUND THE MACHINE DRY、HEALTH AND SAFE.



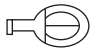
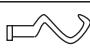
In order to keep safety, when using Mixing device I/II/III , Please pay attention to insert their grooves which are from the handles into the spiral axle pin separately. Furthermore, rising the bowl to the highest positon, so that the edge of the bowl is higher than Mixing device I/II/III working position.

## TROUBLE SHOOTING AND SPECIFICATION

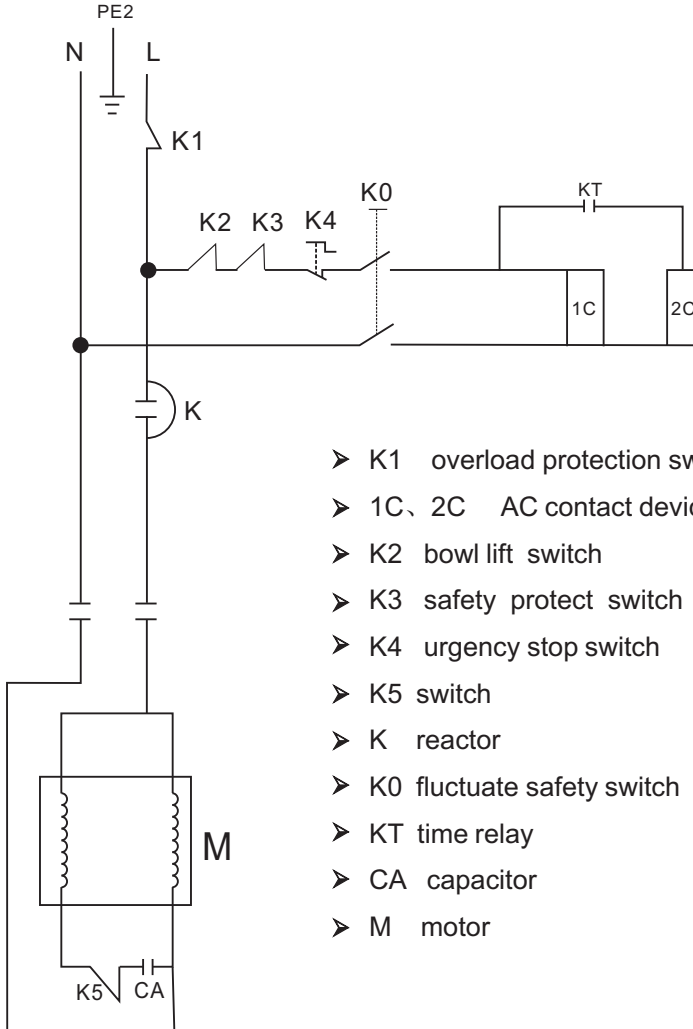
### TROUBLE SHOOTING

Trouble	Possible Causes	Re-cover
The axle can't work when operate the machine.	Poor contact of the electrical equipment.	Check the plug.
The mixing bowl out of position.	Moving direction is not correct.	
Leak oil.	Sealing washer is damaged.	Change.
Defficult to move the bowl up and down.	Slideway is rusted.	Clean the slideway and lubrication.
The motor is overheat and speed down.	The voltage is not enough, or incorrect speed.	Check the voltage or use lower speed.
Noise and over heat.	Poor lubrication.	Add or change lubrication.
Mixer touch the bowl.	The mixing device or bowl deformed.	Repair or change the bowl or mixing device.

### SPECIFICATION

Type	B10GFA	B15GFA	B10GFA	B15GFA
Mixer (L)	10	15	10	15
Power Supply (V)	110-120V	110-120V	220-240V	220-240V
Input Power (W)	600	600	600	600
Mixing Speed (r.p.m)		508	508	480
		258	258	244
		156	156	148
Maxflour Capacity(kg)	2.5	3.5	2.5	3.5

## ELECTRIC DIAGRAM



- K1 overload protection switch
- 1C、2C AC contact device
- K2 bowl lift switch
- K3 safety protect switch
- K4 urgency stop switch
- K5 switch
- K reactor
- K0 fluctuate safety switch
- KT time relay
- CA capacitor
- M motor

Marketed globally by:

### TRUFROST COOLING PRIVATE LIMITED

1215, 12th Floor, Tower B, Emaar Digital Greens, Golf Course Extn. Road,  
Sector 61, Gurugram – 122102

T. +91-124- 4246560 info@trufrost.com

[www.trufrost.com](http://www.trufrost.com)